

Jack Evans Boat Harbour Plan of Management

## **Appendix B**

### **Jack Evans Boat Harbour Parkland usage and event guidelines**



**THIS PAGE IS BLANK**

## TABLE OF CONTENTS

|   |           |
|---|-----------|
| <b>Introduction.....</b>                                  | <b>1</b>  |
| Available Spaces .....                                    | 1         |
| <b>JEBH Use and Event Guidelines:.....</b>                | <b>2</b>  |
| Public Amenity: .....                                     | 2         |
| Physical and Visual Park access: .....                    | 2         |
| Signage:.....   | 2         |
| Temporary structures: .....                               | 2         |
| Passive Use Areas.....                                    | 3         |
| Market Types .....  | 3         |
| Unauthorized Park Use .....                               | 3         |
| Fees and Charges .....                                    | 3         |
| Council Planning and Permit Processes .....               | 3         |
| <b>Existing Festivals and Events on JEBH .....</b>        | <b>4</b>  |
| <b>JEBH Use and Event Sites.....</b>                      | <b>5</b>  |
| 'Goorimahbah' Precinct .....                              | 6         |
| Central Beach Precinct .....                              | 8         |
| Twin Towns Frontage Precinct.....                         | 11        |
| Anzac Memorial Precinct .....                             | 13        |
| Southern Beach Precinct .....                             | 15        |
| Bay Street Precinct .....                                 | 17        |
| Pathways and Boardwalk Network.....                       | 19        |
| <b>APPENDICES .....</b>                                   | <b>23</b> |
| Site Map Symbols Legend .....                             | 23        |
| Market Site Parameters and considerations .....           | 24        |
| Other Parameters Outlined by this Plan.....               | 24        |
| <i>Site Capacity Calculations (people) - .....</i>        | <i>24</i> |
| Additional Tweed Shire Council Supporting Documents ..... | 24        |

**THIS PAGE IS BLANK**

## Introduction

The Jack Evans Boat Harbour (JEBH) Parkland Use and Event Guidelines (PUEG) provides a set of opportunities for the use of the public open space at this significant and recently renovated open space in Tweed Heads. It provides guidance for event organisers, park user groups and the Tweed Shire Council staff responsible for approving and managing temporary outdoor events and regular on-going park use.

In addition to its day-to-day functioning as a regional parkland, the types of festivals, events and organised activities which may be catered for by the site include, but are not limited to, the following:

- Large scale performance/amphitheatre space and temporary stage locations
- Busking and small scale performance sites
- Markets
- Exhibitions (sculpture competitions, art festivals etc)
- Marquee sites for functions (conferences, wedding ceremonies etc)
- Display and Demonstration sites (i.e. during regional events such as car/bike rallies and the display of classic cars during the 'Cooly Rocks On' festival)
- Surf Club beach training (nippers, especially in times of poor weather/tidal conditions)
- Beach and water focussed events (i.e. dragon boat race, surf club demonstrations, fireworks displays and water performance)
- Small water craft hire operations (non-motorised)
- Bike / beach umbrella hire operations
- Group fitness / personal training / yoga
- Rally or public meeting
- Special needs group water activities (assisted access to tidal water via DDA compliant ramps)

These Guidelines allow for the management and authorization of Tweed Shire Council Park and Public Open Space use for the purposes of holding events in a one off or regular capacity. This includes both revenue raising and non-revenue raising uses.

The PUEG primarily provides a series of site maps which outline a site-by-site description of public use opportunities within the Jack Evans Boat Harbour. Specifically they include Goorimahbah, Chris Cunningham Park and the series of water edge sites and spaces which have been identified as suitable for a variety of outdoor events.

## Available Spaces

The following public spaces are available for outdoor events and regular park use. They are illustrated in the 'JEBH Site Key Plan' in the 'Use and Event Sites' section of this document :

- Goorimahbah (Place of Stories) Precinct
- Central Beach Precinct, incorporating the northern headland and water platforms
- Twin Towns Frontage Precinct
- Anzac Memorial Precinct
- Southern Beach Precinct, incorporating the beach platform areas
- Bay Street Precinct, incorporating the picnic and BBQ sites
- Pathway and Boardwalk Network

## JEBH Use and Event Guidelines:

In addition to the requirements of permits which will be allocated to approved applicants, regular park use groups and event organisers will be required to acknowledge and abide by the following General Site Use Requirements. The physical parameters of these items are outlined on the specific site use maps.

### Public Amenity:

- Events and park uses shall protect the amenity of public domain users and adjoining properties, in terms of noise, lighting and environmental impacts.

### Physical and Visual Park access:

- Events shall not obstruct general public access to harbour foreshores and pedestrian links as identified on the site maps, unless specifically agreed to by TSC.
- The event organiser/promoter shall ensure that event staff and patrons are encouraged to use public transport when attending functions
- The event organiser shall ensure that view corridors along main access routes are maintained and that the event impact on those views is minimised unless specifically agreed to by TSC.

### Signage:

- All necessary signage (including directional signage) must be approved by TSC.
- Specific approval is required for the use of existing TSC signage infrastructure to erect additional signage (i.e. to hang banners between or over other signs).
- General advertising is not permitted on a sign, furniture or temporary structures
- All temporary signage associated with a permissible temporary event will not be installed more than 24 hours prior to the event and shall be removed within 24 hours after that event has taken place, unless alternative hours have been agreed to by TSC.

### Temporary structures:

- Must be confined to the event site area outlined on the site map (Organisers to provide exact location within this area as required by planning permits or upon request by TSC)
- Must include a minimum 1 metre separation between any market stalls
- Must be structurally sound and erected in accordance with manufacturer's specifications and relevant Australian Standards
- Must be secured in a manner that prevents them from collapsing or being dislodged by wind or adverse conditions. Structures not capable of withstanding extreme wind conditions must be removed as soon as it becomes apparent that such conditions are likely to develop, or as directed by TSC.
- Must not be attached to any building, tree, signage or other site structures for stability
- Must be generally limited to 7 metres in height
- Must be weighted for stability on the grass by use of water or concrete weights. The use of pegs and stakes is strictly prohibited due to irrigation, electrical and other service lines
- Shall be set-up a maximum of 24 hours prior to the event and removed within 24 hours after the event, unless alternative hours have been specifically agreed to by TSC. Council will take no responsibility for the security of any temporary structures left on site outside of Council's operational hours.



### Passive Use Areas

Whilst co-ordinators of singular events and programmed uses such as market stalls will provide a site plan to represent how they are using the site (within the parameters of this Guidelines), TSC acknowledge that some uses are more passive and impermanent in nature. Users such as 'boot camp' style personal training, yoga and other fitness groups will be required to provide a detailed list of ALL areas they propose as options for use. i.e. relocation of use in wet weather/extreme heat conditions.

ALL USERS are expected to operate within the parameters of the Use and Event site plans and adhere to general spatial restrictions which limit the impact of their use upon other users of the park. This is to be noted especially with regards to the clearance zones pathways and gathering areas such as seating, picnic and BBQ shelters.

### Market Types

TSC acknowledges that there is already a strong local and regional Market network operating both within the Tweed and neighbouring Gold Coast communities. The Jack Evans Boat Harbour Parklands provide an opportunity to contribute to this network in addition to the local regional economy by catering for a 'boutique' market event.

It is desirable that the JEBH Markets bring focus to the Northern NSW/Southern QLD region by embracing the potential of local industries. For example, a 'slow foods' market, which may be accompanied by live jazz music and have dining stalls provided by local restaurants to showcase their food. In this instance, local businesses have the potential to prosper beyond the market event itself. (See Appendices for other Market Parameters)

### Unauthorized Park Use

These Guidelines preclude any person, group or organisation from holding an event or from using the Parks and Open Space of Tweed Shire Council for commercial purposes without approval from Tweed Council in accordance with these Guidelines and other planning/regulatory requirements. Unauthorized use will be managed by Tweed Shire Council Park Rangers.

### Fees and Charges

Fees and charges associated with the use of the JEBH Parklands will be assessed and managed on a case-by-case basis through a competitive tender process, requiring evidence of detailed business planning. Some fees and charges are provided on Council's website at: <http://www.tweed.nsw.gov.au/DoBusiness/FeesAndCharges.aspx>

### Council Planning and Permit Processes

Many proposed uses and events are subject to Tweed Shire Council's strategic and planning processes. Please visit [www.tweed.nsw.gov.au](http://www.tweed.nsw.gov.au) and download for your reference:

- The Draft Tweed Shire Festivals and Events Strategic Plan 2008-2013
- DA checklist #15 for Events and Festivals.
- Application Forms for: Casual Park Hire, Busking and Community Events.

## Existing Festivals and Events on JEBH

Council already allows for and manages a number of events and festivals on site at the JEBH on an annual or bi-annual capacity. As an indication, the following is a summary list of the events organised to occur on site upon partial and full completion of the Stage 1 works (*currently estimated to be June 2011*):

### 2011

|          |  |
|----------|--|
| March    | NSW Surf Life Saving Championships ( <i>back-up venue only</i> ) |
| June     | World Environment Day (4 or 5th TBC)<br>Cooly Rocks on (10-12th) |
| July     | NAIDOC Week Event (8th)  |
| August   | Local Government Week Family Fun Day (date TBC)                  |
| October  | Tweed River Festival   |
| November | Kids in Need Dragon Boat Festival (date TBC)                     |
| December | New Year Eve Fireworks (31st)                                    |

### 2012

|         |  |
|---------|--|
| January | Australia Day (26th)   |
| March   | Seniors Week (18th or 25th)  |
| April   | Youth Week (mid April)<br>Anzac Day (25th).  |
| May     | Battle of the Border Cycling Festival: Major new cycling festival, fun social ride called GRAN FONDO (Early May) |



## JEBH Use and Event Sites

This section of the JEBH PUEG provides a physical description of each site, information on the facilities available and suggests types of events which may be considered as appropriate for each site. It also illustrates the preliminary issues which must be addressed and standards to be met by any long term regular park uses or temporary events.

For each site, the plans and their corresponding written descriptions outline:

- site significance, functions, issues and parameters
- the types of outdoor events and structures that are suitable
- site capacities and existing facilities available

### JEBH Parklands Site Key-plan



## **'Goorimahbah' Precinct**

### ***Site Significance and Space Development.***

"Goorimahbah - Place of Stories" is the largest open space available in the JEBH Parklands. With the Stage 1 development works at Jack Evans Boat Harbour, this site has only begun to be transformed into its future intended landscape form.

The Community and Council developed concept for the site incorporates additional story walls to the one already constructed at the Coral Street Access point. These will form the canvas for the development of a series of laser cut metal artwork panels which depict the traditional Indigenous stories and history of the region in illustrations and written text.

In addition to being a place of cultural and educational significance, the site will cater for large events. To do so, it has been designed to incorporate a large central open hard stand area for performances which can be watched from the already shaped natural amphitheatre landform. In the immediate term, this area will still be grass and any event or performance would require management of the grass area for heavy vehicle or equipment use.

Also to be developed in this area is a Picnic and BBQ area with shelters and a collection of indigenous botanical species which will provide more sheltered informal and intimate spaces for gathering. These spaces will require careful management during future large scale events.

### ***Possible Event Types***

- Large scale gatherings (performances/conferences)
- Medium and Small Gatherings (wedding groups / community BBQs etc)
- Open Air cinema

### ***Possible Regular Use Types***

- Outdoor Market Stalls
- Night Market (as part of overall site night market network)
- Boot-camp/personal training fitness - in open grass/mounded areas + shaded treed grass areas
- Yoga and relaxation classes (i.e. landscape painting)
- Wedding Photography site: Story-wall area

### ***Summary Site Capacities and Facilities***

- Car-Parking: Capacity (immediate JEBH northern carpark + Boundary Street) X 112parks
- Toilets : Public Unisex with max.220m walking distance X10 (inc. 2XDDA compliant facilities')
- Power Supply: minimum 32 amp/3 Phase (cable and electrical management plan to be submitted)
- Temporary Structures: small to large such as marquis, bandstands and tents
- Vehicular Access: Temporary Only for set-up of stalls and equipment. Light vehicle access restricted to shared pathways only. NO VEHICLES ON TIMBER WITHOUT SPECIFIC PERMISSION GRANTED. Heavy Vehicles to be managed on a case by case basis. Traffic management strategy to be supplied by user.
- Night Market linear stalls X 60 approx (3 metre set back from lit shared pathway network).
- Daytime market stall area (on grass): within passive use zones as marked on plans
- Passive Use zones (group fitness/relaxation etc): as marked on plans



Goorimahbah Precinct Site Plan



## Central Beach Precinct

### ***Site Significance and Space Development.***

The central beach was developed to maintain the existing harbour water body, and shaped according to the flow of the harbour waters. It is designed to form a permanent shallow beach as a contained and safe area in the harbour for young children to swim. At low tide, it also ensures a good amount of sand for play. The beach is bordered by the northern headland, southern water platforms and the grass mound to the back of the beach access ramps, all of which are intended to provide plentiful passive viewing and seating space. Accordingly, at low tide, the sandy beach area could also be used for a variety of purposes from performance to surf-club demonstrations.

In addition to providing viewing over the central beach areas the northern and southern water platforms provide a significant amount of seating opportunities for viewing water events such as the annual dragon boat race, or fireworks competition.

Critical to this space is the 'all abilities' beach access ramp which allows people of all abilities to reach water at any tidal level. This provides the potential for special needs groups to be able to access the harbour for water based activities which require assisted access.

### ***Possible Event Types***

- Small, Medium-Large performances (theatrical or physical i.e. acrobatics/fire twirling)
- Medium and Small Gatherings (wedding groups/conferences)
- Nipper Competitions (beach-water based events)

### ***Possible Regular Use Types***

- Night Market (as part of overall site night market network)
- 'All Abilities' fitness groups (DDA compliant water access ramp on northern Headland)
- Swimming Groups
- Yoga and relaxation classes (i.e. landscape painting)
- Wedding Photography site: Headland/Central Decking Area

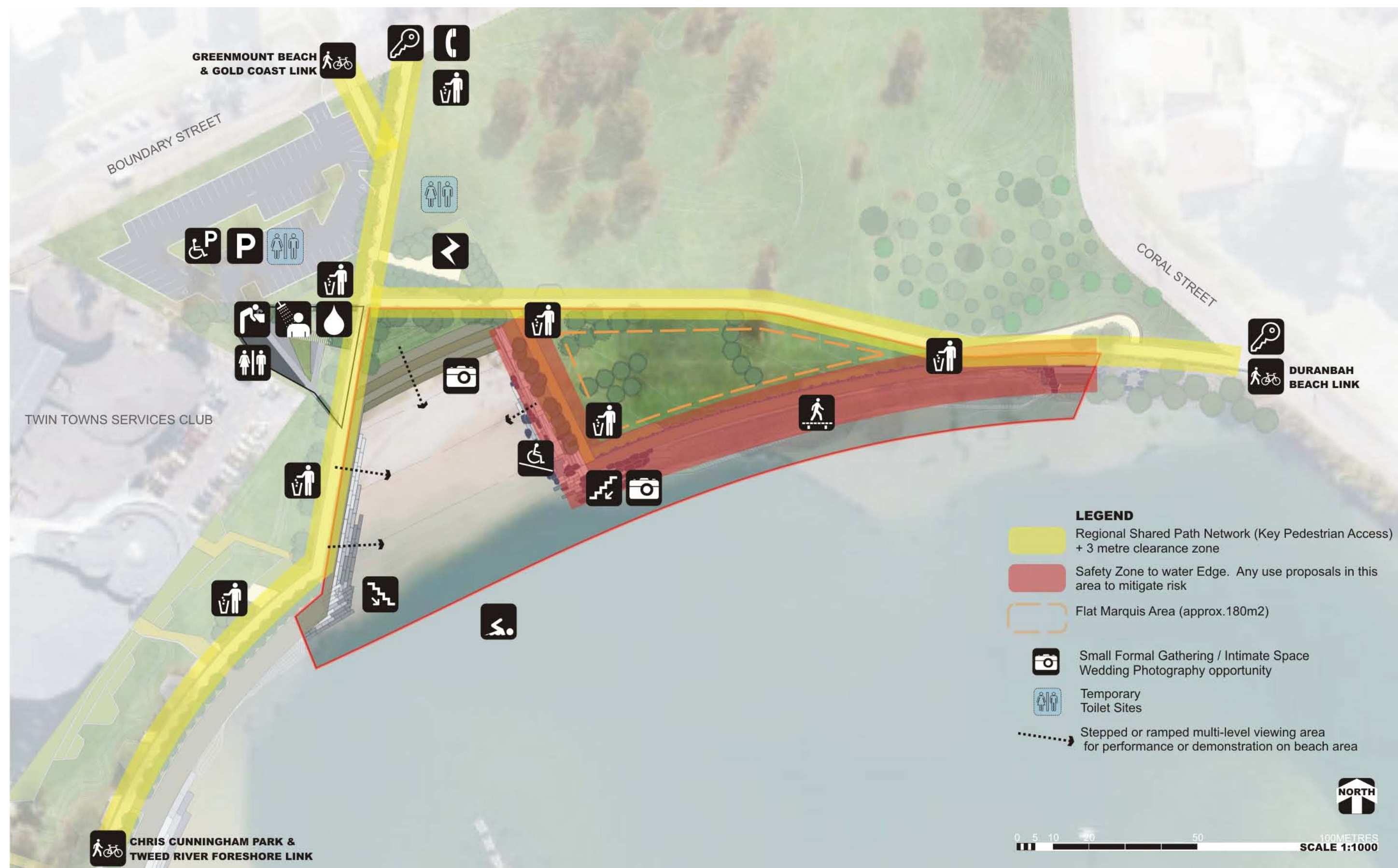
### ***Summary Site Capacities and Facilities***

- Car-Parking: Capacity (immediate JEBH northern carpark + Boundary Street) X 112parks
- Toilets : Public Unisex with max.180m walking distance X10 (inc. 2XDDA compliant facilities')
- Power Supply: minimum 32 amp/3 Phase (cable and electrical management plan to be submitted)
- Temporary Structures: Market and Small-Medium shade structures only.
- Vehicular Access: Temporary Only for set-up of stalls and equipment. Light vehicle access restricted to shared pathways only. NO VEHICLES ON TIMBER WITHOUT SPECIFIC PERMISSION GRANTED. Heavy Vehicles to be managed on a case by case basis. Traffic management strategy to be supplied by user.
- Night Market linear stalls (3 metre set back from headland path).
- Passive Use zones (group fitness/relaxation etc): as marked on plans
- NOTE: THIS AREA IS CLOSE TO THE HARBOUR WATER AND HAS AN EXTENT OF BOARDWALK WITHOUT HANDRAILS TO THE WATER EDGE. ALL PROPOSALS FOR USE IN THIS AREA MUST PROVIDE STRATEGIES FOR MANAGING THIS RISK.

**THIS PAGE IS BLANK**



# Central Beach Precinct Site Plan





## Twin Towns Frontage Precinct

### ***Site Significance and Space Development.***

This narrower stretch of landscape in the parklands plays the critical role of connecting the northern and southern halves of the Park. In this sense it provides a series of smaller linear spaces for more intimate gatherings and displays.

The boardwalk space may provide opportunities for busking and other smaller interactive activities. The smaller grass 'forecourt' landscape between the proposed Twin Towns access paths will also provide a sheltered area for similar uses.

In addition, the grass mounding to the North and South of this area provide additional informal seating areas for viewing activity on and around the harbour waters.

### ***Possible Event Types***

- Small Gatherings / displays / demonstrations (Twin Towns 'forecourt' area)

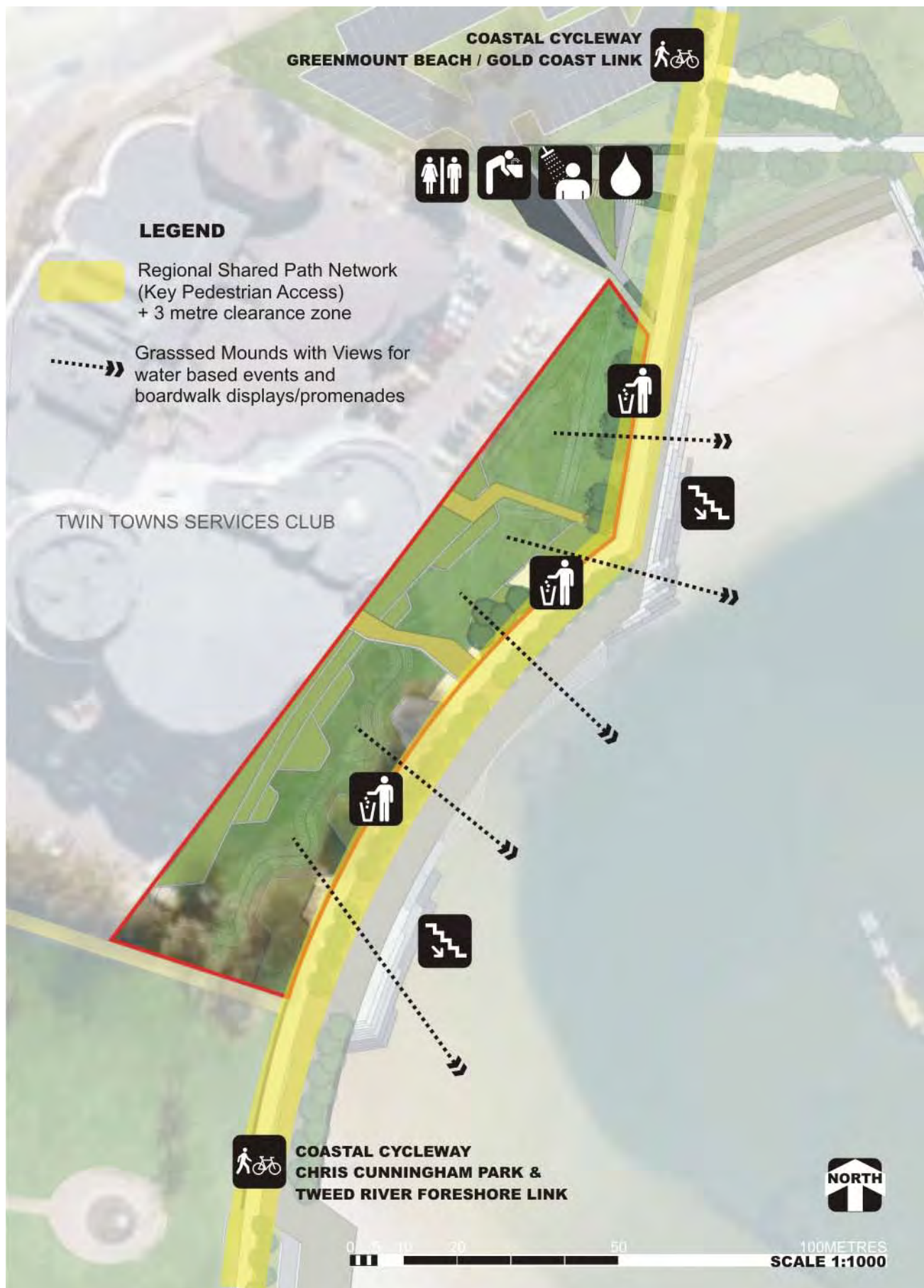
### ***Possible Regular Use Types***

- Passive seating/viewing areas for water based and harbour edge (i.e. lantern parade) events
- Busking - not sound producing / living statues.

### ***Summary Site Capacities and Facilities***

- Car-Parking: JEBH northern carpark + Boundary Street (50-300m distance), Chris Cunningham Park carpark (120-220m distance), Centro Shopping Centre Carpark (250m+)
- Toilets : Public Unisex with max.160m walking distance X10 (inc. 2XDDA compliant facilities')
- Power Supply: limited in this area
- Temporary Structures: Small shade structures only.
- Vehicular Access: Temporary Only for set-up of stalls and equipment. Light vehicle access restricted to shared pathways only. NO VEHICLES ON TIMBER WITHOUT SPECIFIC PERMISSION GRANTED. Heavy Vehicles to be managed on a case by case basis. Traffic management strategy to be supplied by user.
- Night Market: none
- Passive Use zones: none

## Twin Towns Frontage Precinct Site Plan



## Anzac Memorial Precinct

### ***Site Significance and Space Development.***

Traditionally this area which forms a part of the broader Chris Cunningham parkland is an important space for memorial events and nationally significant events such as Anzac day and Australia day flag raising ceremonies. Accordingly this site will retain its capacity for hosting events of a smaller scale, as well as taking on the role of additional space when larger festivals and events are being held across the entire harbour landscape.

Specifically the memorial site provides a more intimate stage and performance environment than that of Goorimahbah. It also offers an opportunity to cater for specific uses during festivals and events which occupy the entire harbour, such as a food stall and dining areas or the installation of sheltered areas for children's and elderly person's activities and the St Johns Ambulance for example. It could be considered a good organizational space for participants in water based events such as the Dragon Boat Festival with a close proximity to the Sothern Beach and Beach platforms for launching the boats.

### ***Possible Event Types***

- Memorial Events
- Small - Medium performances (stage space available)
- Overflow area for Southern beach-water based events (i.e. dragon boat)
- Food, dining, first aid and other overflow uses for a large scale - entire harbour event.

### ***Possible Regular Use Types***

- Night Market (as part of overall site night market network)

### ***Summary Site Capacities and Facilities***

- Car-Parking: Chris Cunningham Park Carpark (40-220m), Wharf Street parking (immediate and across the road via formal pedestrian crossings X2), Centro Shopping Centre carpark (from 150m.)
- Toilets : Public Unisex with max.260m walking distance to JEBH facilities X10 (inc. 2XDDA compliant facilities') and Max 150m to 2XDDA compliant facilities at Visitor Information Centre.
- Power Supply: minimum 32 amp/3 Phase (cable and electrical management plan to be submitted)
- Temporary Structures: Market and Small-Medium shade structures only.
- Vehicular Access: Temporary Only for set-up of stalls and equipment. Light vehicle access restricted to shared pathways only. Heavy Vehicles to be managed on a case by case basis. Traffic management strategy to be supplied by user.
- Night Market linear stalls (3 metre set back from headland path).
- Passive Use zones: none



## Anzac Memorial Precinct Site Plan



## Southern Beach Precinct

### ***Site Significance and Space Development.***

The southern beach platforms are designed for daily use at any tidal depth, offering the opportunity for a place to relax in the sun at the waters edge or access the Southern Beach via stairs from the Boardwalk network. Importantly, it also provides a safe point for getting in and out of boats for events like the dragon boat carnival.

Traditionally, the open beach area has also been used at low tide for acrobatic and fire-based performances and this capacity remains, to be used in conjunction with the newly formalised central beach area in the Northern half of the site. This area may be considered as the destination for the annual lantern parade for example.

### ***Possible Event Types***

- Small, Medium-Large performances (theatrical or physical i.e. acrobatics/fire twirling)
- Nipper Competitions (beach-water based events)
- Un-powered boating events (i.e. dragon boat / vintage small boat races etc)

### ***Possible Regular Use Types***

- Small craft hire facility (based at South Eastern corner of the beach area).
- Busking: Sound Producing (non-amplified) and non-sound producing / living statues
- Boot-camp/personal training fitness - NOT ON BOARDWALK and SEATING AREAS
- Yoga and relaxation classes
- Night Market overflow

### ***Summary Site Capacities and Facilities***

- Car-Parking: Chris Cunningham Park Carpark (40-220m), Wharf Street parking (immediate and across the road via formal pedestrian crossings X2), Centro Shopping Centre carpark (from 150m.)
- Toilets : Public Unisex with max.260m walking distance to JEBH facilities X10 (inc. 2XDDA compliant facilities') and Max 150m to 2XDDA compliant facilities at Visitor Information Centre.
- Power Supply: minimum 32 amp/3 Phase (cable and electrical management plan to be submitted)
- Temporary Structures: Small-Medium shade structures only (on beach area only).
- Vehicular Access: Temporary Only for set-up of stalls and equipment. Light vehicle access restricted to shared pathways only. NO VEHICLES ON TIMBER WITHOUT SPECIFIC PERMISSION GRANTED. Heavy Vehicles to be managed on a case by case basis. Traffic management strategy to be supplied by user.
- Night Market: capacity for overflow on boardwalk areas
- Passive Use zones: none

## Southern Beach Precinct Site Plan





## Bay Street Precinct

### ***Site Significance and Space Development.***

The Bay Street Precinct comprises the southern extent of the Jack Evans Boat Harbour Parklands. To date it has been used primarily for local small scale gathering for BBQ's, picnics and to sit in the shade in between swimming in and recreating on the harbour. In this sense, the use of this area will not differ much from its current use; however the future staging of development will see improved BBQ and Picnic facilities and shelters. In addition, the concept plan allows for additional tree planting.

The concept plan also outlines the formalisation of a site for the management of small, unpowered water craft hire operation. This includes the improvement of the existing shower facility to increase shower numbers, provide foot-wash taps and a drinking fountain.

This area forms a key seating and viewing area for water based events; especially the fireworks displays. However, where it was formerly used as an overflow carpark, vehicular access will no longer be allowed.

### ***Possible Event Types***

- Viewing, organisational and overflow areas for larger events.

### ***Possible Regular Use Types***

- Small craft hire facility (based at South Eastern corner of the beach area).
- Boot-camp/personal training fitness - NOT ON BOARDWALK OR SEATING AREAS
- Yoga and relaxation classes
- Night Market (as part of overall site night market network)

### ***Summary Site Capacities and Facilities***

- Car-Parking: Chris Cunningham Park Carpark (immediate area), Bay Street parking (immediate and across the road), Centro Shopping Centre carpark.
- Toilets : Public Unisex with max.300-350m walking distance to JEBH facilities X10 (inc. 2XDDA compliant facilities') and max.150m to 2XDDA compliant facilities at Visitor Information Centre.
- Power Supply: minimum 32 amp/3 Phase (cable and electrical management plan to be submitted)
- Temporary Structures: Small-Medium shade structures only (on grass areas only).
- Vehicular Access: Temporary Only for set-up of stalls and equipment. Light vehicle access restricted to shared pathways only. NO VEHICLES ON TIMBER WITHOUT SPECIFIC PERMISSION GRANTED. Heavy Vehicles to be managed on a case by case basis. Traffic management strategy to be supplied by user.
- Night Market: linear stalls (3 metre set back from V.I.C connection path).
- Passive Use zones: mounded and shaded grass areas.

Bay Street Precinct Site Plan



## Pathways and Boardwalk Network

### ***Site Significance and Space Development.***

The Regional Pathway and Boardwalk Network of the JEBH have significance to both the heritage of the landscape and the current use of the Harbour itself. Historically, the JEBH parklands area was occupied by the back-bend of the Tweed River. Originally, the landscape which now forms the Anzac Memorial and Twin Towns sites comprised a number of busy wharves and jetty projecting into the river back-bend from Wharf Street, where people would come to promenade and meet on the weekends.

The new design of the Harbour Edge acknowledges the tradition of meeting in Tweed Heads as well as the need for an increased capacity due to the growing local population and continued attraction to visit Tweed Heads and nearby Coolangatta.

The extent of the Regional Cycleway through the site is the Northern most and final extent of the Tweed Regional Cycleway project and forms a critical connection to the extensive Gold Coast Cycleway. Acknowledging the imminent high use of this path system, the design also provides a series of boardwalks and smaller paths to allow people to move slowly through the site and find a place to sit.

With both regional and local connectivity, these path systems offer the potential for places to meet and lend themselves to uses such as busking, art display and in the evenings, due to their lighting, offer the opportunity for a linear night market.

In addition, this large formalised pedestrian movement network would enable the use of the entire parkland for interconnected series of functions during larger festivals and events. The JEBH has been used this way previously for River Festival events.

### ***Possible Event Types***

- Larger Festivals requiring a series of different spaces for organising use such as food, dining, relaxation and first aid areas

### ***Possible Regular Use Types***

- Night Market stretched across the parklands
- Busking on boardwalk areas

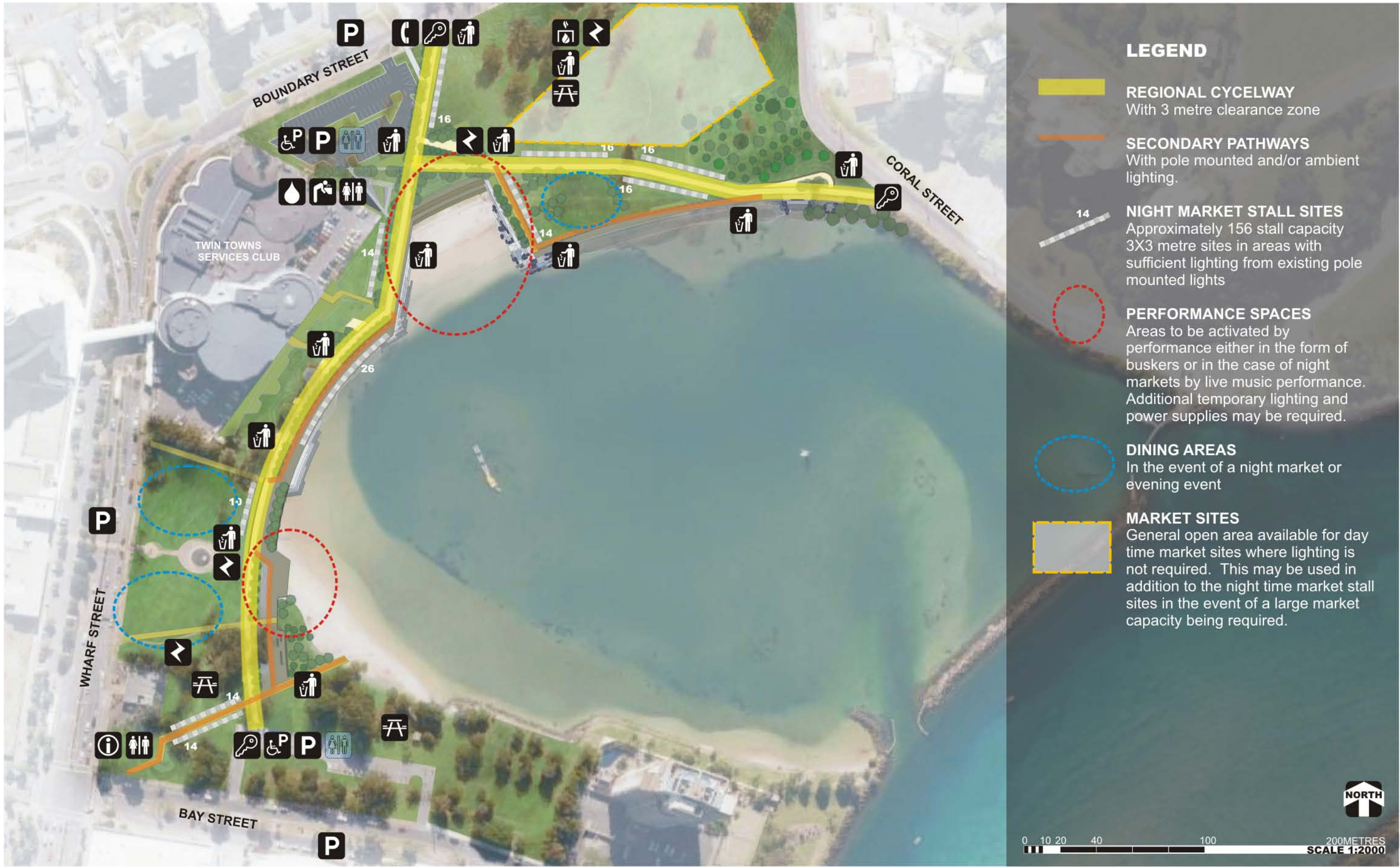
### ***Summary Site Capacities and Facilities***

- Car-Parking: All areas within and surrounding the parklands
- Toilets : Public Unisex JEBH facilities X10 (inc. 2XDDA compliant facilities') and 2XDDA compliant facilities at Visitor Information Centre.
- Power Supply: minimum 32 amp/3 Phase (cable and electrical management plan to be submitted)
- Temporary Structures: 3x3 metre market stall tents only, set back min. 3 metres from paths and on boardwalk areas in times of overflow.
- Vehicular Access: Temporary Only for set-up of stalls and equipment. Light vehicle access restricted to shared pathways only. NO VEHICLES ON TIMBER WITHOUT SPECIFIC PERMISSION GRANTED. Heavy Vehicles to be managed on a case by case basis. Traffic management strategy to be supplied by user.
- Night Market: linear stalls (3 metre set back from paths).
- Passive Use zones: various seating areas on boardwalks and adjacent to paths

**THIS PAGE IS BLANK**



Pathways and Boardwalk Plan



**THIS PAGE IS BLANK**



## APPENDICES

### Site Map Symbols Legend



PUBLIC TOILETS  
TEMPORARY PUBLIC TOILET SITES



WATER TAP  
DRINKING FOUNTAIN



SHARED PATHWAY NETWORK  
BOARD-WALK AREA (PEDESTRIANS ONLY)



DISABLED ACCESS RAMP (TO WATER)  
STAIRS DOWN (TO WATER)



VISITOR INFORMATION CENTRE  
PUBLIC TELEPHONE



PICNIC / BBQ AREAS  
RUBBISH / RECYCLING BINS



CAR-PARK  
DISABLED CAR-PARKS AVAILABLE



SWIMMING AREA  
OUTDOOR BEACH SHOWERS



32AMP 3 PHASE POWER SUPPLY  
BARBEQUE FACILITIES



PHOTO OPPORTUNITY / SCENIC LANDSCAPE



BUS STOP



VEHICULAR ACCESS TO BE APPROVED BY COUNCIL  
KEY REQUIRED FOR REMOVABLE BOLLARD

### Market Site Parameters and considerations

- Stall Size: standard 3X3 metres
- Stall Site: On grass (and boardwalk overflow areas) they should be well weighted on hard ground (NO PEGS DUE TO IRRIGATION/POWER LINES).
- Stall Layout: A flowing arrangement for layout is best- so that people can walk around a circuit and see all the stalls and stallholders get fair exposure. In the case of JEBH, TSC proposes a linear configuration
- Car Parking: keep vehicles off site, have reserved (and controlled) loading-unloading areas preferably with pathways for stallholders to trolley their gear to their sites and back. Stallholders should park away from the site leaving close parking for customers.
- Attendance: Numbers vary depending on time of year, type of market, advertising etc
- Facilities: public toilets are needed nearby.
- Market Management: Management of the markets is for Council to decide and will be organised on a case by case basis. Generally, markets be treated as businesses and if the market succeeds as a business then the benefits to the broader community will follow. Accordingly, TSC expects that Expressions of Interest for markets reflect this attitude and provide all information for self-management.
- Market Content: What is permitted for sale is also to be considered. TSC would prefer that any proposed markets support the local and regional economy. Expressions of Interest should address this specifically.

### Other Parameters Outlined by this Plan

#### Site Capacity Calculations (people) -

The following general formulas have been used in estimating the capacities of sites for the purposes of this document. Regular event organisers may have a different, more current set of formulas to calculate capacities and ask that they clarify these if proposing alternative figures in their submissions.

#### **Patron Capacities**

- |                                     |                              |
|-------------------------------------|------------------------------|
| – General standing room             | .5m <sup>2</sup> p/p         |
| – Dance floor size                  | .45m <sup>2</sup> p/p        |
| – Seated on chairs in rows          | .5m <sup>2</sup> p/p         |
| – Seated on the ground              | .75m <sup>2</sup> p/p        |
| – For drink and food area lines add | 4.5m <sup>2</sup> p/50people |

### Additional Tweed Shire Council Supporting Documents





Customer Service | 1300 292 872 | (02) 6670 2400

[tsc@tweed.nsw.gov.au](mailto:tsc@tweed.nsw.gov.au)

[www.tweed.nsw.gov.au](http://www.tweed.nsw.gov.au)

Fax (02) 6670 2429

PO Box 816

Murwillumbah NSW 2484