

# Worst Weeds of the Tweed



Jacqui Paine



# Giant Devils Fig – woody weed



*Giant devil's fig establishing in pasture.*

# Camphor Laurel - tree



# Lantana- shrub



# Cats Claw Creeper - vine



# Singapore daisy - groundcover



# Value of native vegetation

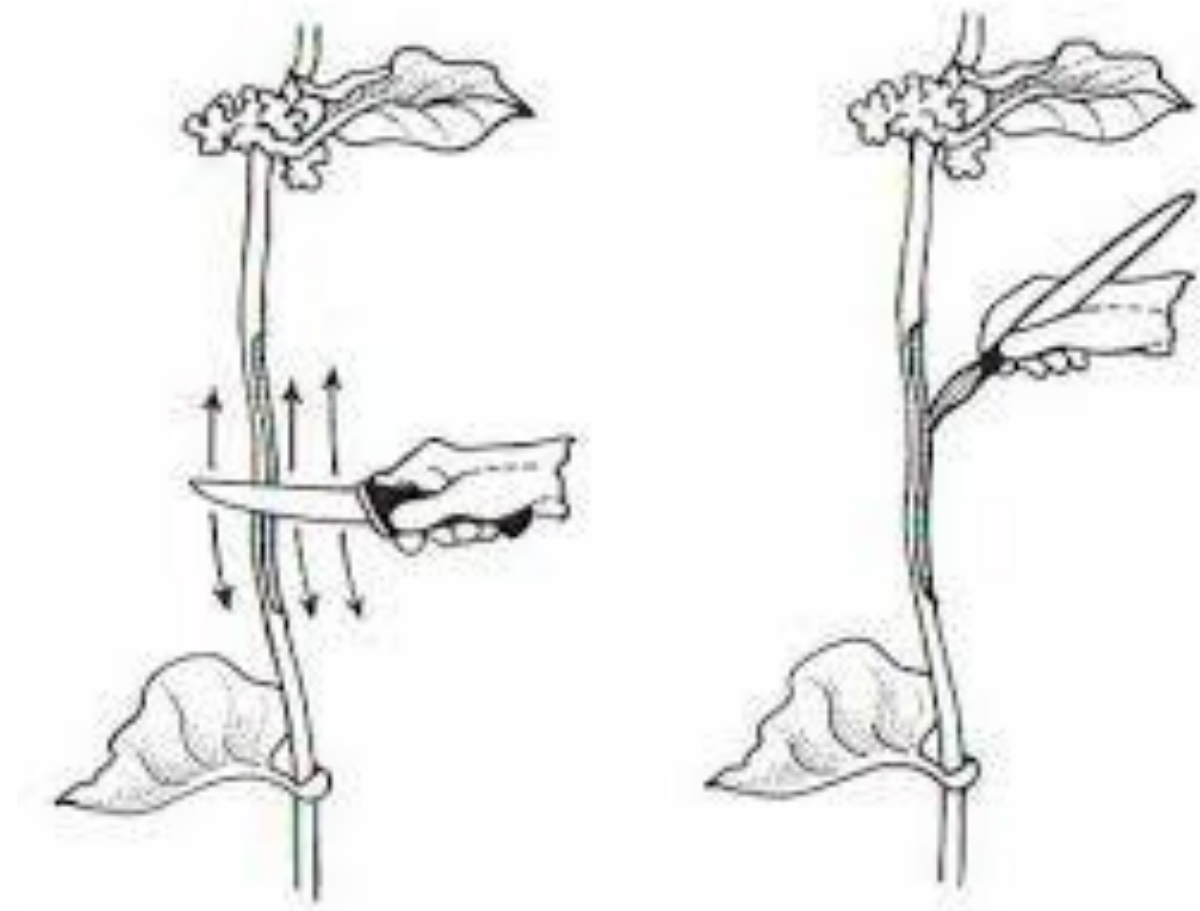
- Stabilises land, reduces erosion
- Reduces riverbank erosion and provides healthy waterways
- Promotes biodiversity and with that the Beneficial's
- Shade



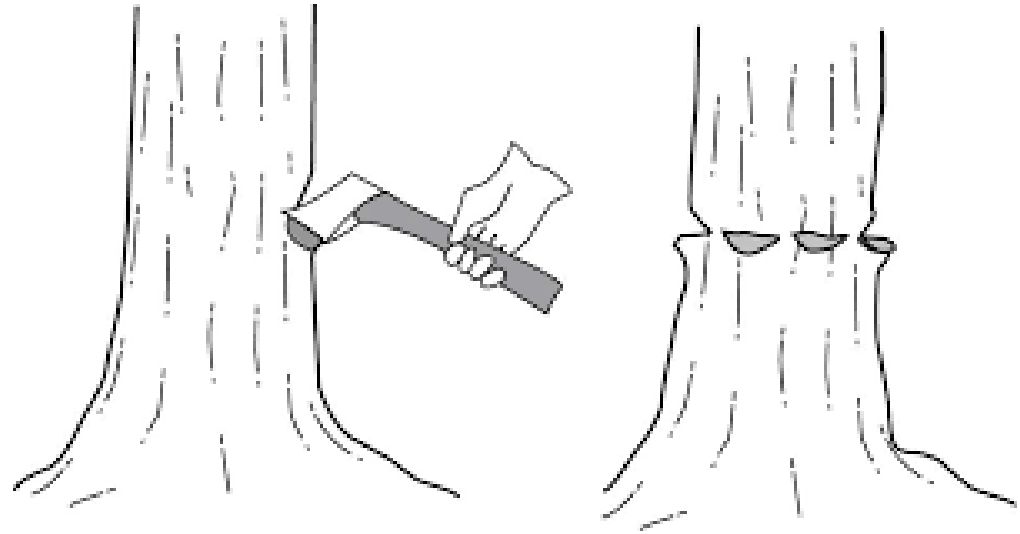
How to stop the bush to paddock invaders –  
not like this!



Cut, scrape & paint



# Drill or Frill and inject



# Spot Spray



# What will we use - herbicides

- Use as little as possible; for you and the environment.
- Chemicals are expensive
- Chemicals can be hazardous
- Glyphosate is most commonly used
- Some chemicals are residual
- Some chemicals cannot be used near water
- READ THE LABEL



READ SAFETY DIRECTIONS BEFORE OPENING OR USING

# Metfuron

## HERBICIDE

ACTIVE CONSTITUENT: 600g/kg METSULFURON METHYL

GROUP **B** HERBICIDE

For control of certain broad and broadleaf species in native pastures, rights of way and commercial and industrial areas and for the control of certain broadleaf weeds in winter cereal crops, grass pastures and pasture renovation as per Directions for Use table.

IMPORTANT: READ THE ATTACHED LEAFLET BEFORE OPENING OR USING

**farmalinx** *Partners in Agriculture*

FARMALINX Pty Ltd ABN 55 134 383 743  
Level 15, Suite 208B, Tower 3, 911 Grange Street, Bond Junction NSW 2220  
T: 02 9089 2455 F: 02 9089 2544 W: www.farmalinx.com



# So, read the label

- Choose you PPE
- Mix only what you need
- Record what you have used
- Observe the weed, be patient.



# Prevention

- Treat weeds when they are small
- Target them before they flower and seed
- Check all parts of your farm regularly
- Check high risk pathways (along creeks, roads, fencelines and under fruiting trees).
- Target weeds threatening natives, don't open up to much area and let in lots of light.

# Lastly,

- If you don't know what it is, ASK
- Council, Landcare, Rous County Council, DPI

