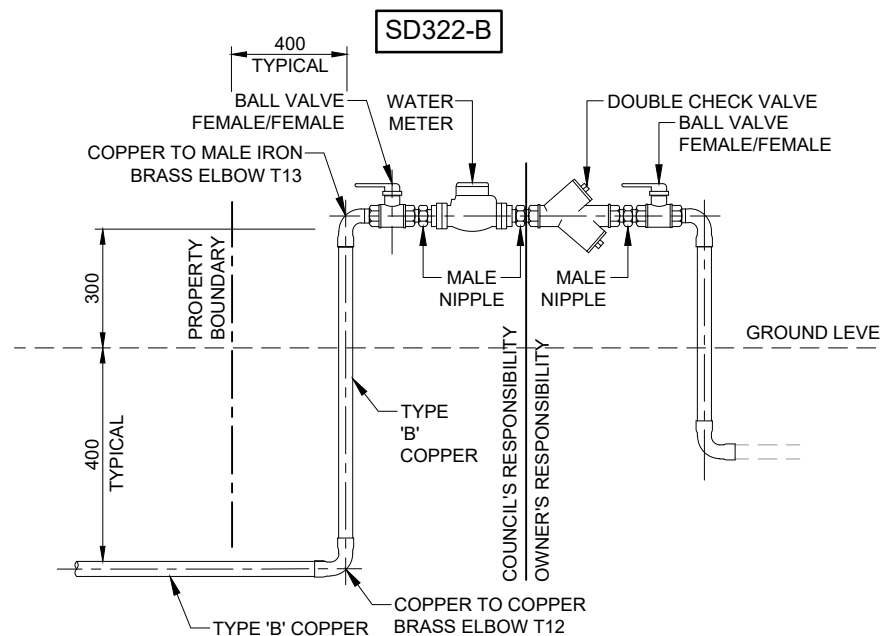
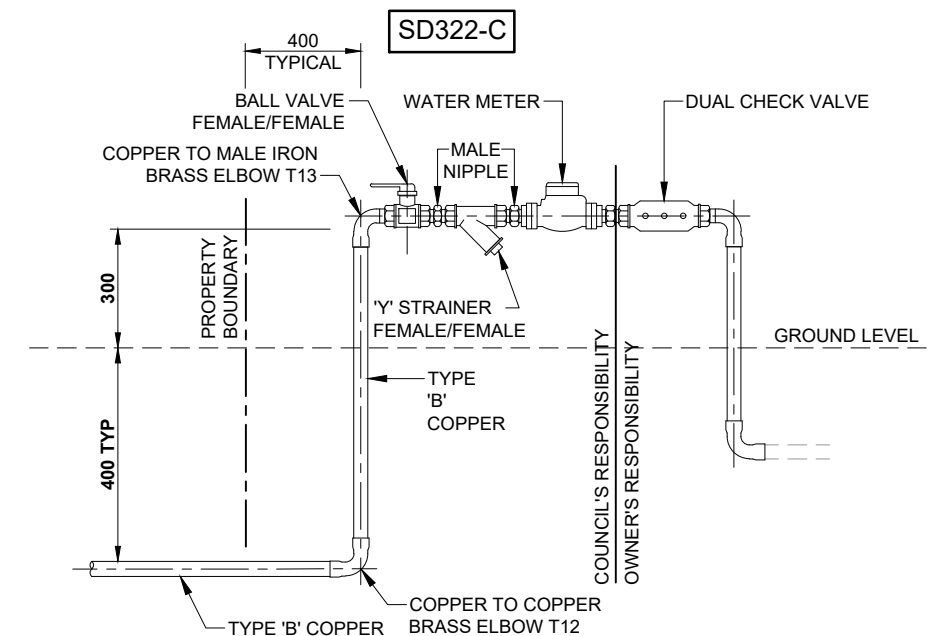


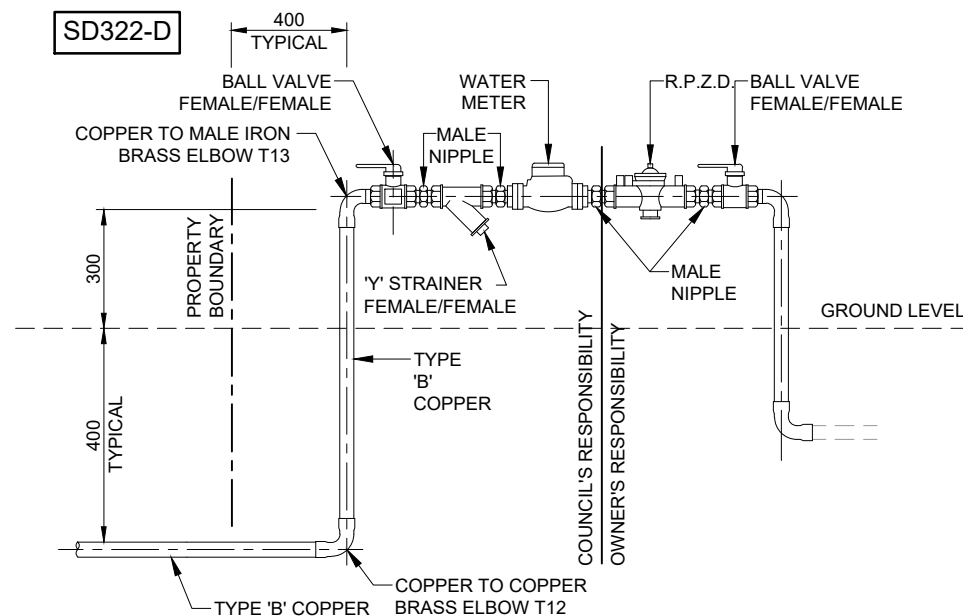
**DN40/DN50 COMMERCIAL/INDUSTRIAL WATER METER
NO FIRE HOSE REELS
LOW TO MEDIUM BACKFLOW HAZARD RATING**



**DN40/DN50 COMMERCIAL/INDUSTRIAL/DOMESTIC WATER METER
WITH FIRE HOSE REELS
LOW TO MEDIUM BACKFLOW HAZARD RATING**

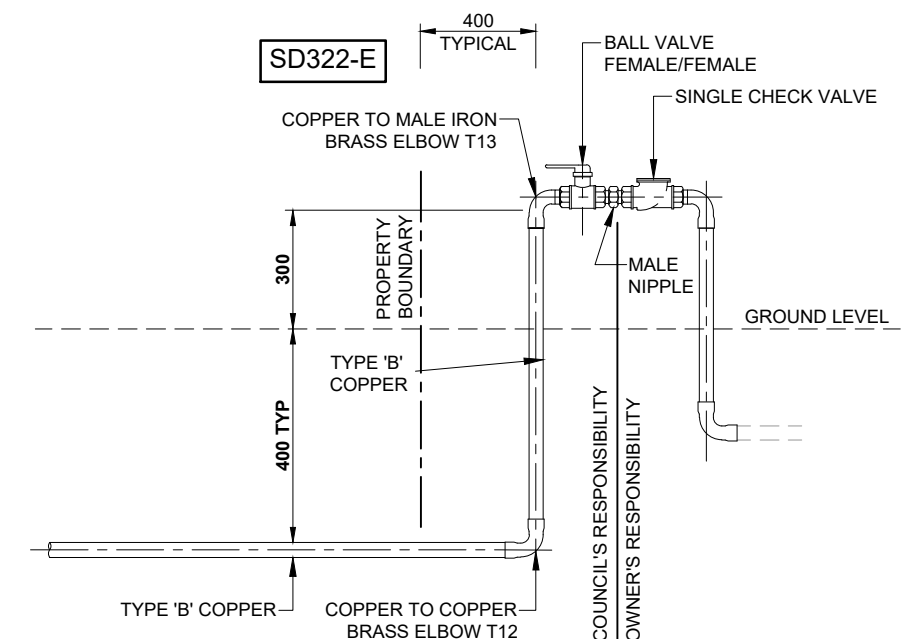


**DN40/DN50 DOMESTIC WATER METER
NO FIRE HOSE REELS
LOW BACKFLOW HAZARD RATING**



**DN40/DN50 COMMERCIAL/INDUSTRIAL/DOMESTIC METERED WATER SERVICE
NO FIRE HOSE REELS
HIGH BACKFLOW HAZARD RATING**




NOTES:
1. REFER SD 300 - 302 FOR SERVICE LAYOUT DETAILS, SERVICE CONDUITS DETAILS AND CONNECTION DETAILS
2. ANY IRRIGATION LINE TAKEN OFF THE SUPPLY SHALL REQUIRE ADDITIONAL BACKFLOW PREVENTION DEVICES INSTALLED AT TAKE OFF POINT
3. WALL OR WINDOW DRENCHER SPRINKLER SUPPLY MAY BE TAKEN OFF FIRE SPRINKLER SERVICE



**DN40/DN50 WALL OR WINDOW
DRENCHER SERVICE**

TO BE USED FOR THE FOLLOWING APPLICATIONS

1. RURAL SERVICES WHERE CHEMICAL MIXING IS LIKELY TO OCCUR.
2. RURAL SERVICES WHERE CATTLE TROUGHS HAVE INCORRECT AIR GAPS.
3. SERVICES WITH HIGH HAZARD RATINGS AS PER A.S. 3500 PART 1 (e.g. SEWAGE TREATMENT PLANTS & LIFT STATIONS, HOSPITALS & MORTUARIES, ALTERNATE WATER SUPPLIES etc.)

				 <div>TWEED SHIRE COUNCIL</div> <div>COUNCIL OFFICES TUMBULGUM ROAD, MURWILLUMBAH, NEW SOUTH WALES 2484 PHONE 02 6670 2400 FAX 02 6672 7513 WEBSITE www.tweed.nsw.gov.au</div>	DESIGN ENGINEER	 DATE 11.05.15	PROJECT: WATER SUPPLY STANDARDS	DRAWING NUMBER: S.D. 322
C	RESPONSIBILITY LINE MOVED	J.M.M.	05.2023		DESIGN MANAGER	 DATE 22.05.15		
B	NOTES AMENDED & PLAN FORM UPGRADED	G.P.C.	06.2015		DRAWN	ENGINEERING & OPERATIONS DESIGN UNIT	PLAN TITLE: DN40 & DN50 PROPERTY SERVICE DETAILS	MAY 2023
A	ORIGINAL ISSUE	J.P.	05.2006		SCALE	NOT TO SCALE		
ISSUE	AMENDMENT DETAILS	INITIALS	DATE		ACAD FILE No: G:_AAA TSC STANDARD DRAWINGS\300 WATER SUPPLY\S.D.322 (June-15 Rev B).dwg			

0 mm10 mm20 mm30 mm40 mm50 mm100 mm150 mm200 mm250 mm