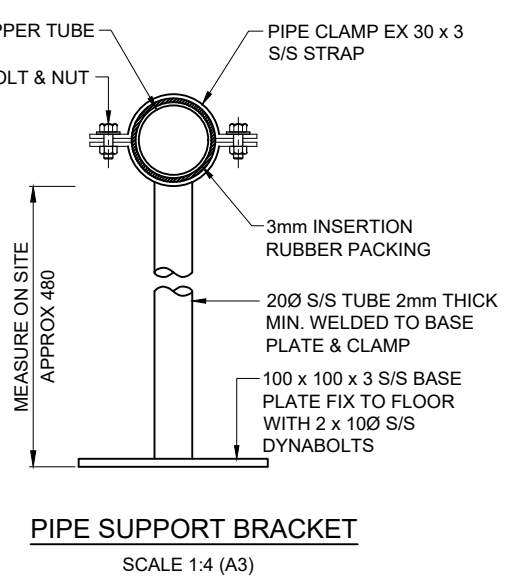
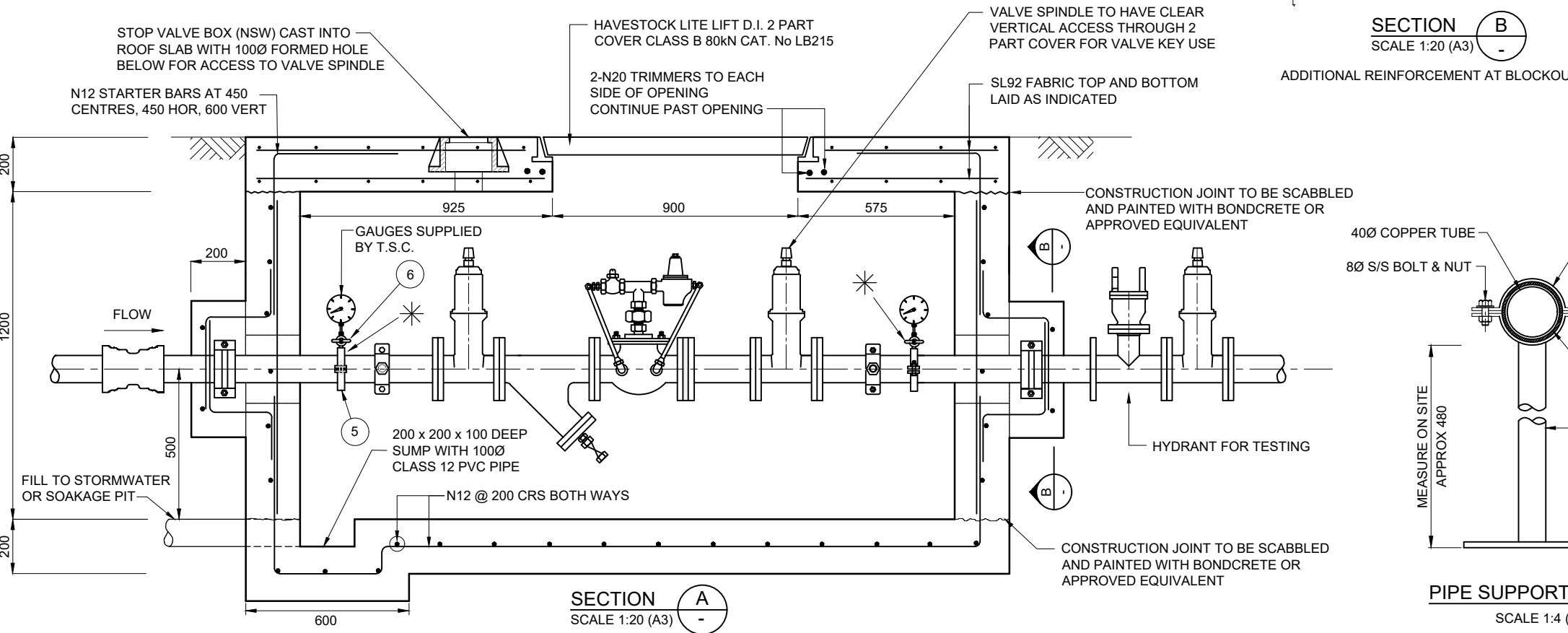
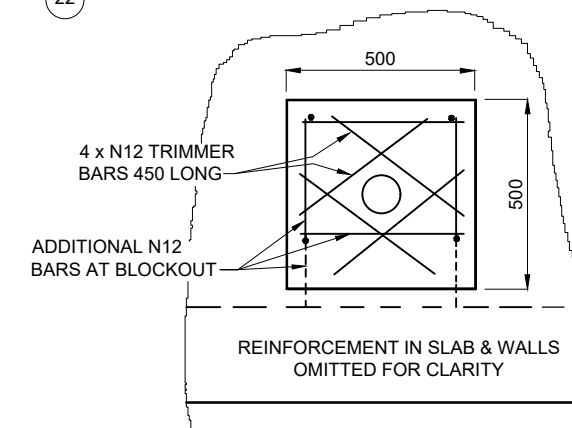
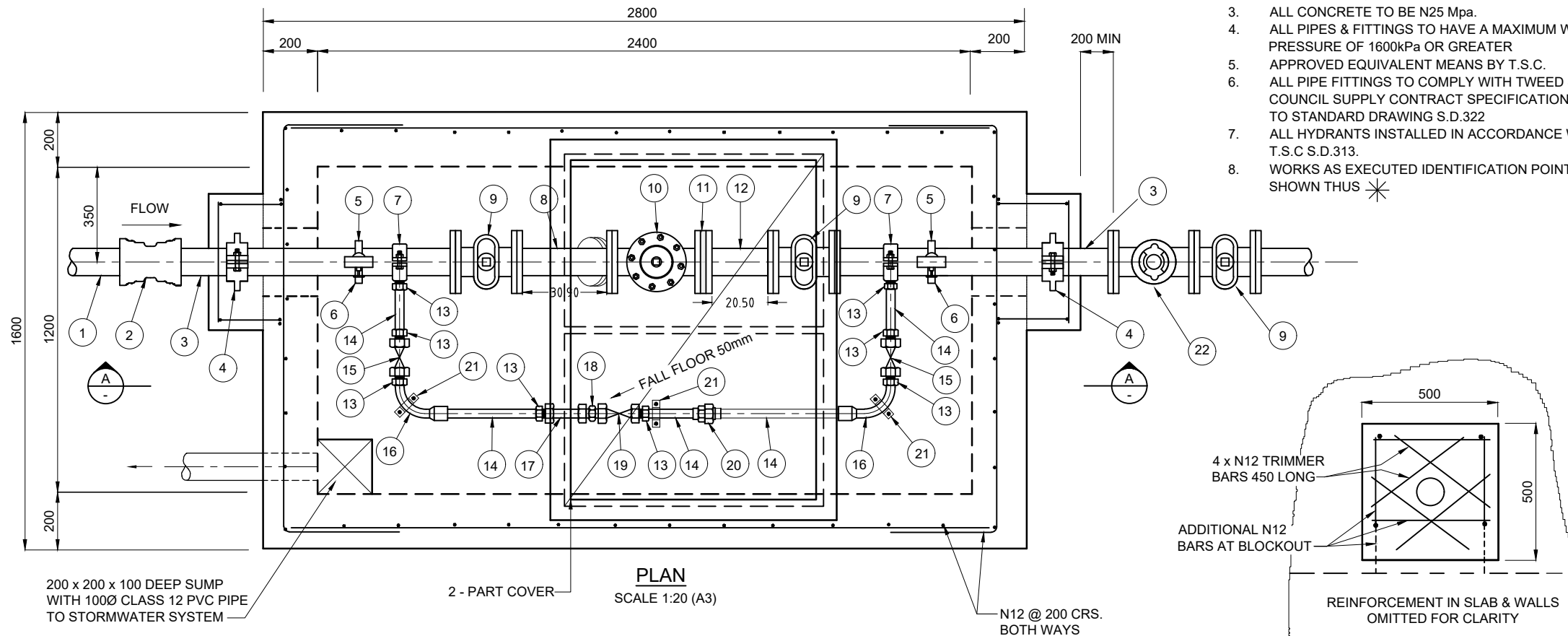


NOTES:

1. ALL FLANGES TO CLASS 16 AS4087 FIG. B5
2. ALL SLUICE VALVES TO AS. 2638 CLASS 16 OR APPROVED EQUIVALENT.
3. ALL CONCRETE TO BE N25 Mpa.
4. ALL PIPES & FITTINGS TO HAVE A MAXIMUM WORKING PRESSURE OF 1600kPa OR GREATER
5. APPROVED EQUIVALENT MEANS BY T.S.C.
6. ALL PIPE FITTINGS TO COMPLY WITH TWEED SHIRE COUNCIL SUPPLY CONTRACT SPECIFICATION. REFER TO STANDARD DRAWING S.D.322
7. ALL HYDRANTS INSTALLED IN ACCORDANCE WITH T.S.C S.D.313.
8. WORKS AS EXECUTED IDENTIFICATION POINTS SHOWN THUS *

ITEM	FITTINGS SCHEDULE	DIA.	No.
1	DI CL PIPE	100	
2	DI CONNECTOR SOCKET-SOCKET	100	1
3	DI FLANGE-SPIGOT CONN. 1100 LONG	100	2
4	PUDDLE FLANGE(Machined & glued in place)	100	2
5	20mm TAPPING SADDLE (S/S)	100	2
6	DR BRASS BALL VALVE PN20 CHROMIUM PLATED BRASS BALL WITH PTFE SEAT & SEALS	20	2
7	40mm TAPPING BAND (SS ADJUSTABLE CLAMPS)	100	2
8	FBN COATED D.I. FL/FL 'Y' STRAINER CL 16 S/S MESH SIZE 1.6mm MAX. WITH 25mm THREADED BRASS PLUG ON OUTLET, FITTED WITH 25mm BALL VALVE	100	1
9	FBN COATED STOP VALVE FL/FL RESILIENT SEATED	100	4
10	PRESSURE REDUCING VALVE - CLA-VAL SERIES 600. DI FBN COATED	100	1
11	DI UNI. FLANGE	100	1
12	DI FLANGE-SPIGOT CONNECTOR 205 LONG	100	1
13	BRASS MALE TUBE BUSH	40	8
14	COPPER PIPE TYPE 'B' (CUT TO SUIT)	40	5
15	DR BRASS BALL VALVE PN20 CHROMIUM PLATED BRASS BALL WITH PTFE SEAT & SEALS	40	2
16	COPPER LONG RADIUS 90° BEND	40	2
17	BRASS FEMALE BSP 'Y' STRAINER. SHED 2 - 800 MICRON MESH (2000kPa WORK PRES.)	40	1
18	BRASS NIPPLE	40	1
19	PRESSURE REDUCING VALVE - CLA-VAL SERIES 600. DI FBN COATED	40	1
20	BRASS UNION COPPER TO COPPER	40	1
21	S/S PIPE SUPPORT BRACKET		3
22	FIRE HYDRANT ASSEMBLY		1



REINFORCEMENT SCHEDULE			
BAR	SIZE	LENGTH	No
550	N12	3700	8
2600	N12	2500	28
1400	N12	1100	40
1100	N12	2600	12
2600	N12	700	8
350	N12	400	4
200	N12	450	8
150	N12	1050	16
400	N12		
450	N12		
600	N12		

TOTAL - 36 x 6m LENGTHS N12 BARS
2 x 1500 x 950 SL92 MESH
2 x 1500 x 600 SL92 MESH

SCALE: A1 SHEET 1:10, A3 SHEET 1:20
0 0.1 0.2 0.4 0.6 0.8 1 m

ISSUE	AMENDMENT DETAILS	INITIALS	DATE
E	PIPE FITTING ARRANGEMENT AMENDED	S.K.J	09.01.20
D	PIPE FITTINGS AND FITTINGS SCHEDULE AMENDED	S.K.J	06.2019
C	SUMP PIT ADDED	A.K.R.	09.2015
B	NOTES AMENDED & PLAN FORM UPGRADED	G.P.C.	06.2015
A	ORIGINAL ISSUE	J.P.	05.2006

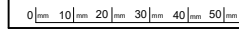


DESIGN UNIT
COUNCIL OFFICES
TUMBULGUM ROAD,
MURWILLUMBAH,
NEW SOUTH WALES 2484
PHONE 02 6670 2400
FAX 02 6672 7513
WEBSITE www.tweed.nsw.gov.au

DESIGN ENGINEER DATE 14.09.15
DESIGN MANAGER DATE 14.09.15
DRAWN	ENGINEERING & OPERATIONS DESIGN UNIT
SCALE	AS SHOWN

PROJECT: **WATER SUPPLY STANDARDS**
PLAN TITLE: **DN 100 PRESSURE REDUCING VALVE INSTALLATION DETAILS**

DRAWING NUMBER: **S.D. 314**
JAN 2020



ACAD FILE No: G:_AAA TSC STANDARD DRAWINGS\300 WATER SUPPLY\S.D.314 (June-15 Rev B).dwg