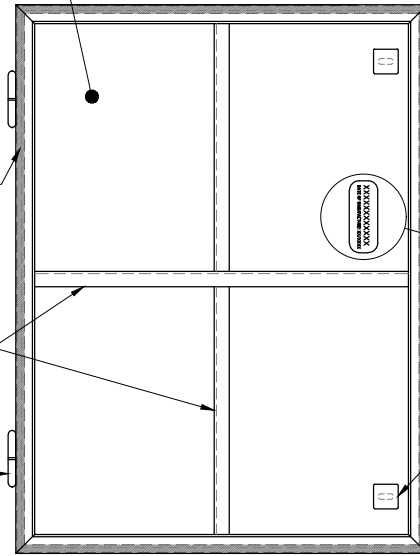


MIN. 4mm THICK ALUMINIUM CHEQUER PLATE THICKNESS TO BE DESIGNED INDIVIDUALLY TO SUIT OPENING

COVER MANUFACTURER TO PROVIDE AN ALUMINIUM PERIMETER FRAME (i.e. ANGLES OR CHANNELS) TO SUIT EACH INDIVIDUAL COVER

COVER MANUFACTURER TO PROVIDE ALUMINIUM STRENGTHENING RIBS (i.e. PLATES, ANGLES OR CHANNELS) TO SUIT EACH INDIVIDUAL COVER

BULLET HINGE SHALL HAVE A MINIMUM 120mm LENGTH WITH THE SIZE TO BE DETERMINED BY THE COVER MANUFACTURER TO SUIT EACH INDIVIDUAL COVER



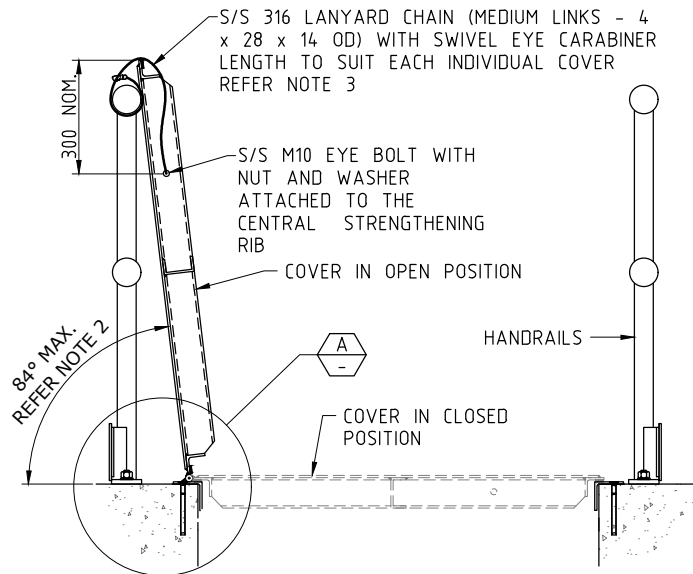
TYPICAL BACK OF ACCESS COVER - PLAN
N.T.S

SEAL WITH 'TESA' PERMAFOAM TAPE 60112 12.7 THICK x 36 WIDE OR APPROVED EQUIVALENT BONDED TO FRAME ON ALL SIDES

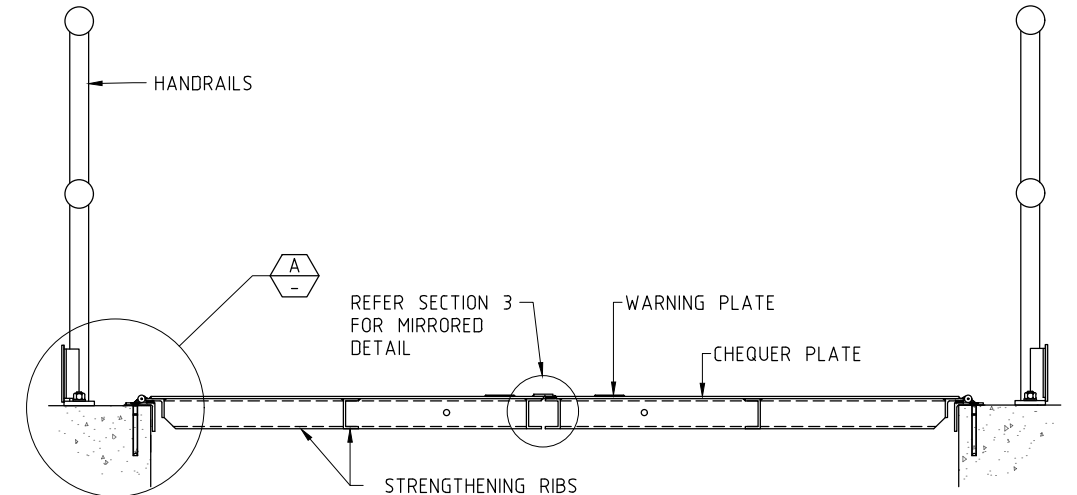
MANUFACTURER'S PLATE WELDED TO COVER

CHEQUER PLATE EDGE

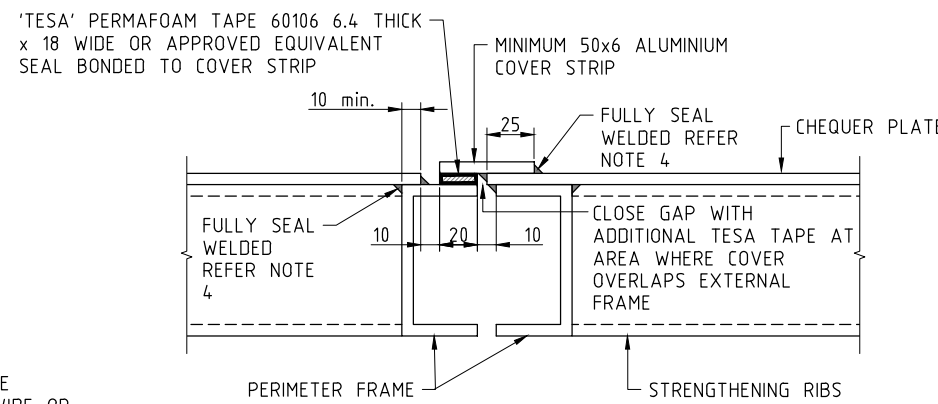
KEYWAY BOX



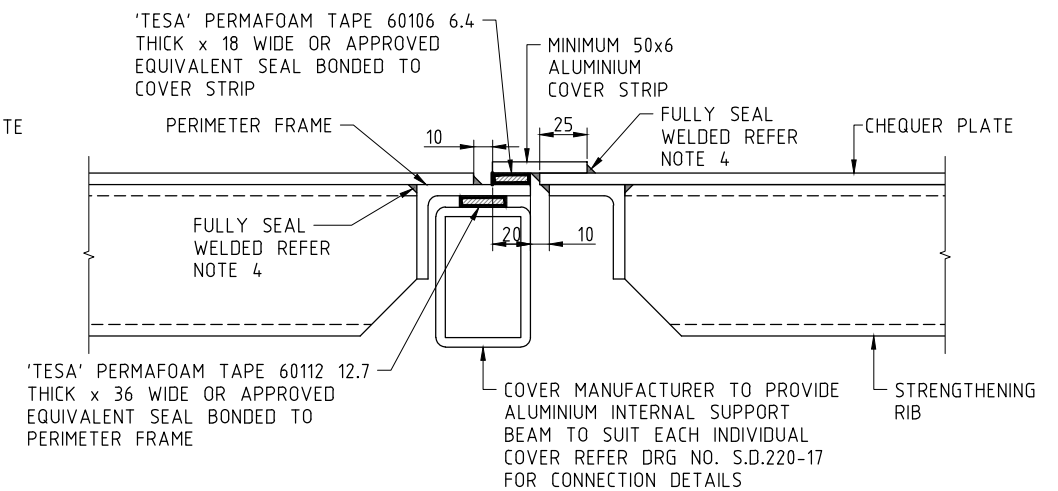
SECTION 1
5



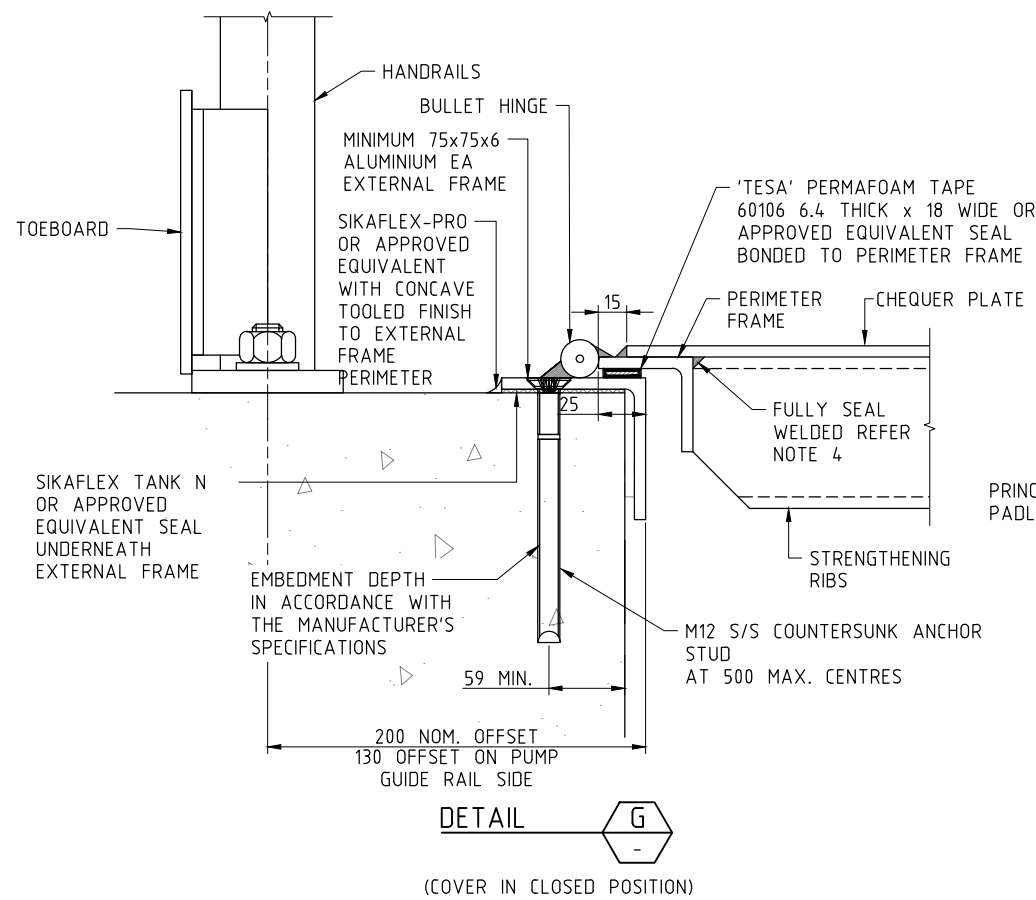
SECTION 2
5



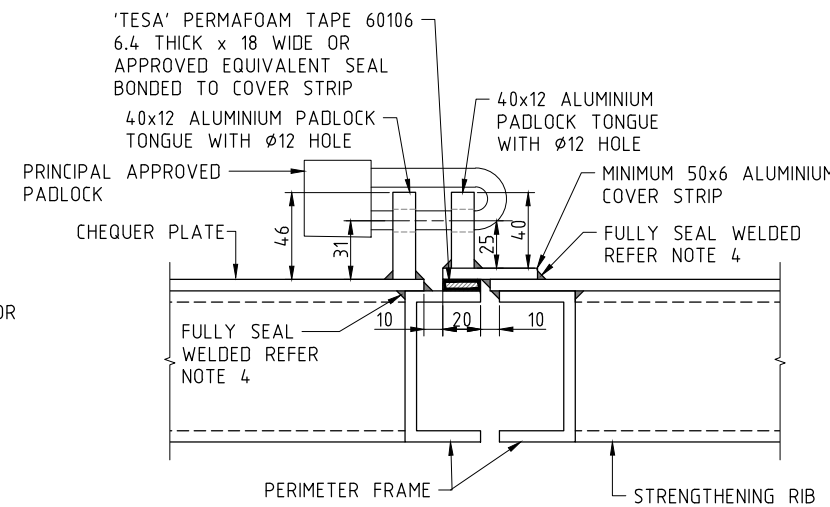
SECTION 3
5



SECTION 4
5



DETAIL G
(COVER IN CLOSED POSITION)



SECTION 5
5

0 20 40 60 80mm
A1 UNREDUCED

NOTES

- REFER DRG NO. S.D.221-01 FOR GENERAL AND MATERIAL NOTES.
- HANDRAILS AND COVERS SHALL BE DESIGNED TO ALLOW COVERS TO OPEN AT LEAST 6° PAST THE VERTICAL.
- COVERS OPENING TOWARDS A HANDRAIL SHALL BE SECURED TO THE HANDRAIL BY A STAINLESS STEEL LANYARD WITH SWIVEL EYE CARABINER; THE LANYARD SHALL BE ATTACHED TO THE COVER'S CENTRAL STRENGTHENING RIB.
- WET WELL COVERS SHALL BE COMPLETELY SEALED BY FULLY SEAL WELDS AS SPECIFIED OR ALTERNATIVELY INTERMITTENT WELDS WITH "SIKAFLEX TANK N" OR APPROVED EQUIVALENT SEALANT.
- "SIKAFLEX TANK N" SHALL BE INSTALLED IN ACCORDANCE WITH THE MANUFACTURER'S SPECIFICATIONS, WITH ALUMINIUM SURFACES TREATED WITH A VERY FINE ABRASIVE PAD AND "SIKA AKTIVATOR-205".
- WET WELL COVERS SHALL BE DESIGNED TO BE COMPLETELY SEALED TO PROVIDE A FULL ODOUR TIGHT SEAL.

SHEET No. 6

DRAWING NUMBER:
S.D.221-06

JUNE 2022



DESIGN UNIT

COUNCIL OFFICES
TUMBULGUM ROAD,
MURWILLUMBAH,
NEW SOUTH WALES 2484

PHONE 02 6670 2400
EMAIL tsc@tweed.nsw.gov.au
WEBSITE www.tweed.nsw.gov.au

DESIGN ENGINEER *Alan* DATE JUNE 2022

W & WW MANAGER *Anthony Bonham* DATE JUNE 2022

DRAWN INFRASTRUCTURE DELIVERY UNIT - DESIGN

SCALE NOT TO SCALE

PROJECT:

SEWERAGE WORKS STANDARDS

DRAWING TITLE:

WET-WELL ACCESS COVERS WITH HANDRAILS
DETAILS

ACAD FILE No: G:_AAA TSC STANDARD DRAWINGS\200 SEWERAGE WORKS\DRAGS-DONT USE\S.D.221-06 (July-22 Rev B).dwg

| | | | |
|-------|-------------------|----------|-------|
| B | GENERAL REVISION | CAH | 07.22 |
| A | ORIGINAL ISSUE | CAH | 06.22 |
| ISSUE | AMENDMENT DETAILS | INITIALS | DATE |