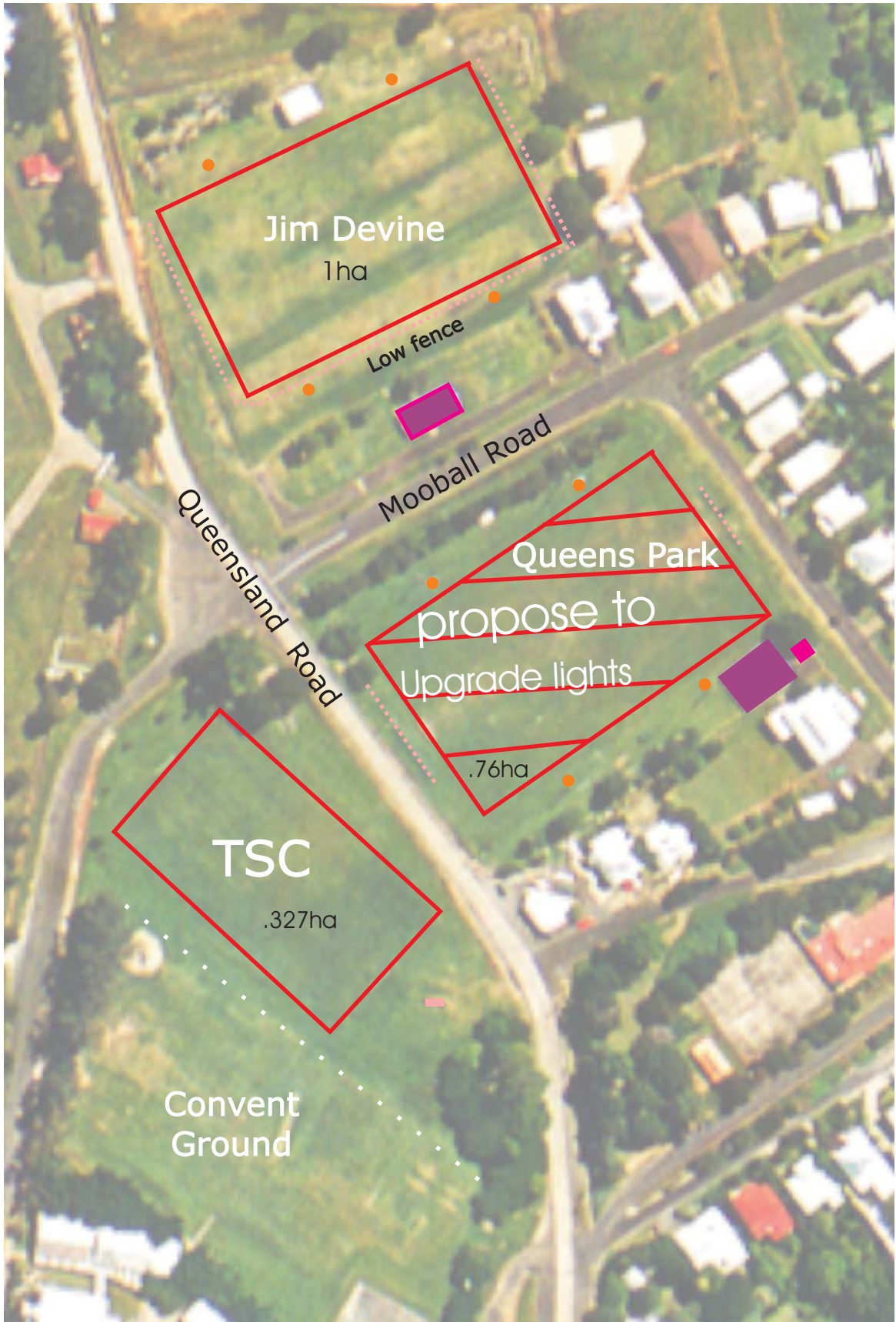









Jim Devine (Lot46 DP 755724 - Area 1.707 ha),  
 Queens Park (R 65931 - Area .76 ha )  
 & Convent Grounds (Lot 1 DP 225827 - Area .6576 ha)  
 Murwillumbah



	Soccer Field		Clubhouse/Toilet		Lights	
	High Back Nets		Kick Board		Toilets	