

**Chair:** Tr Barry Longland

**Trustees:** M Armstrong  
G Bagnall  
C Byrne  
K Milne  
W Polglase  
P Youngblutt

# Agenda

## **Tweed Coast Reserve Trust Meeting Thursday 23 January 2014**

held at Murwillumbah Cultural and Civic Centre  
commencing at 4.30pm

**THIS PAGE IS BLANK**

## Items for Consideration of the Trust:

ITEM	PRECIS	PAGE
	<b>CONFIRMATION OF MINUTES</b>	<b>5</b>
1	Confirmation of the Ordinary Tweed Coast Reserve Trust Meeting held Thursday 12 December 2013	5
	<b>REPORTS THROUGH THE EXECUTIVE MANAGER OF THE TRUST</b>	<b>7</b>
	<b>REPORTS FROM DIRECTOR COMMUNITY AND NATURAL RESOURCES</b>	<b>7</b>
2	[CNR-TCRT] Crown Reserve 1001008 - Lot 7074 DP 1113900	7
	<b>CONFIDENTIAL MATTERS</b>	<b>13</b>

**THIS PAGE IS BLANK**

## CONFIRMATION OF MINUTES

- 1 Confirmation of the Ordinary Tweed Coast Reserve Trust Meeting held Thursday 12 December 2013

SUBMITTED BY: Corporate Governance

---



## Civic Leadership

### LINKAGE TO INTEGRATED PLANNING AND REPORTING FRAMEWORK:

- 1 Civic Leadership
  - 1.2 Improve decision making by engaging stakeholders and taking into account community input
  - 1.2.2 Decisions made relating to the allocation of priorities will be in the long-term interests of the community
- 

### SUMMARY OF REPORT:

The Minutes of the Ordinary Tweed Coast Reserve Trust Meeting held Thursday 12 December 2013 are attached for information and adoption by Council.

### RECOMMENDATION:

**That the Minutes of the Ordinary Tweed Coast Reserve Trust Meeting held Thursday 12 December 2013 be adopted as a true and accurate record of proceedings of that meeting.**

**REPORT:**

As per Summary.

**COUNCIL IMPLICATIONS:**

**a. Policy:**

Code of Meeting Practice Version 2.3.

**b. Budget/Long Term Financial Plan:**

Not applicable.

**c. Legal:**

Not Applicable.

**d. Communication/Engagement:**

**Inform** - We will keep you informed.

**UNDER SEPARATE COVER/FURTHER INFORMATION:**

*To view any "**non confidential**" attachments listed below, access the meetings link on Council's website [www.tweed.nsw.gov.au](http://www.tweed.nsw.gov.au) or visit Council's offices at Tweed Heads or Murwillumbah (from Friday the week before the meeting) or Council's libraries (from Monday the week of the meeting).*

Attachment 1

Minutes of the Ordinary Tweed Coast Reserve Trust Meeting held Thursday 12 December 2013 (ECM 3246433).

---

## **REPORTS THROUGH THE EXECUTIVE MANAGER OF THE TRUST**

### **REPORTS FROM DIRECTOR COMMUNITY AND NATURAL RESOURCES**

#### **2 [CNR-TCRT] Crown Reserve 1001008 - Lot 7074 DP 1113900**

**SUBMITTED BY:** Director

**FILE REFERENCE:**

**TCRT: R1001008**

#### **SUMMARY OF REPORT:**

The Tweed Coast Holiday Parks Reserve Trust has engaged consultants for the preparation of a development application for the redevelopment of South Pottsville Holiday Park.

The Holiday Park operates within Lot 7074 in DP1113900, which has a dual reservation, R1001016 for Caravan Park and R1001008 for Public Recreation and Coastal Environment Protection.

It is necessary for a boundary adjustment to occur whereby the parcel will be subdivided to create different parcels for the separate reservations. This allows the development of the holiday park to progress without conflicting with the reservation of R1001008.

A plan has been prepared and it is recommended that the Trust supports the subdivision of the parcels in light of the differing reservation purposes.

#### **RECOMMENDATION:**

**That Tweed Coast Reserve Trust:**

- 1. The Tweed Coast Reserve Trust provides in principle support to the subdivision of Lot 7074 in DP1113900 as proposed in the report to allow separate reservation of each individual parcel.**
- 2. Provides owners consent for the lodging of the relevant development application.**
- 3. Notifies the proponent and the Crown as landowner of the Trusts support for the subdivision.**

**REPORT:**


The Tweed Coast Holiday Parks Reserve Trust has engaged consultants for the preparation of a development application for the redevelopment of South Pottsville Holiday Park.

The Holiday Park operates within Lot 7074 in DP1113900, which has a dual reservation, R1001016 for Caravan Park and R1001008 for Public Recreation and Coastal Environment Protection. See the plan below:

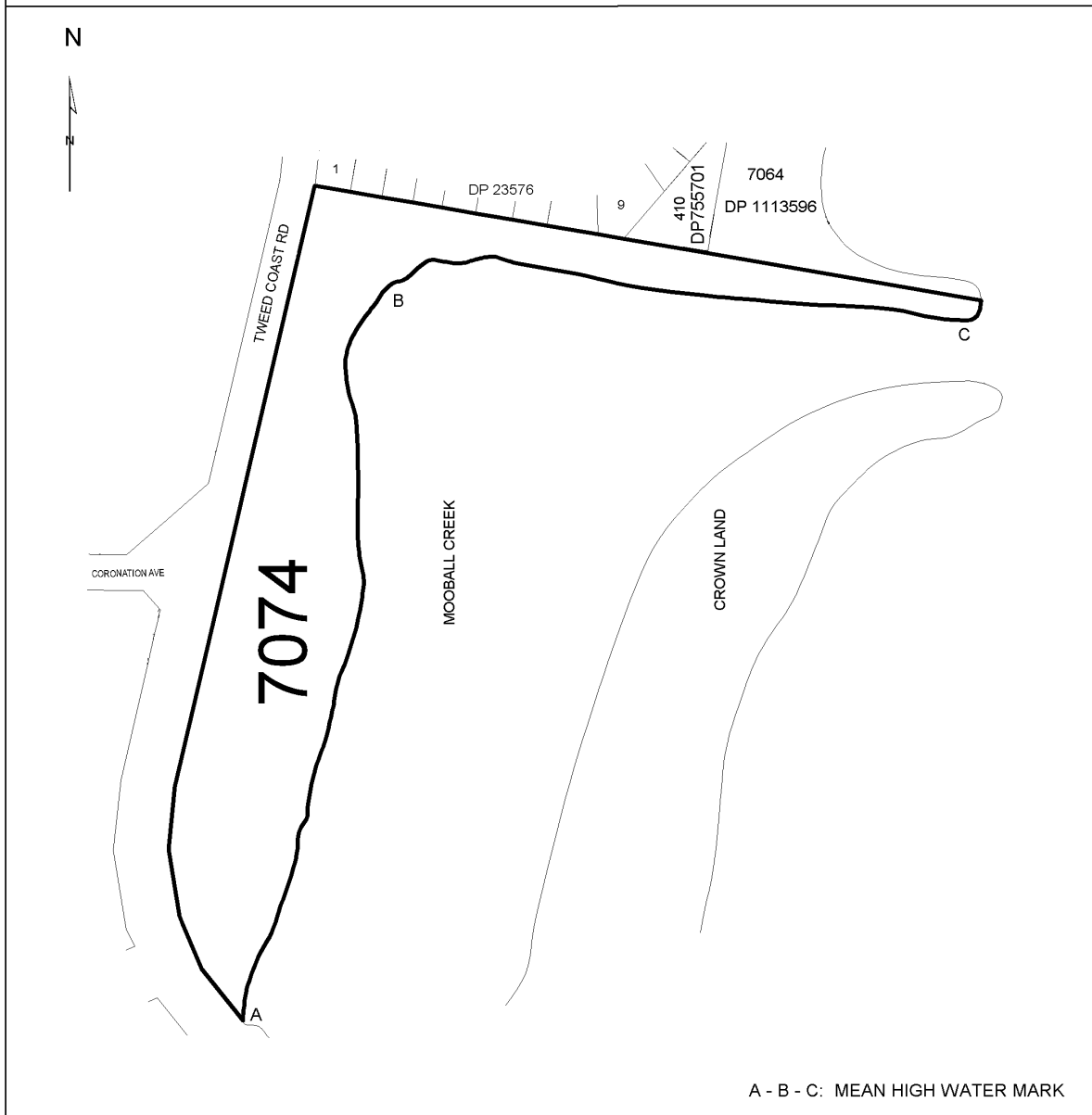


Box:e-IDS /Doc:DP 1113900 P /Rev:10-Jul-2008 /Sts:SC.OK /Prt:11-Jul-2008 02:07 /Egs:ALL /Seq:1 of 1  
 WARNING : Electronic Document Supplied by LPI NSW for Your Internal Use Only.

e-departmental

DP755701-7074		e-departmental	
<b>PLAN OF CROWN LAND</b>		<b>DP 1 1 1 3 9 0 0 (E)</b>	
L.G.A.	TWEED	Registered	 09-06-2007
Town/Locality	POTTSVILLE	Title System	CROWN LAND
Parish	CUDGEN	Purpose	CROWN LAND CONVERSION
County	ROUS	Reference Map	X5452-1
Not to Scale	Lengths are in metres	Last Plan	_____

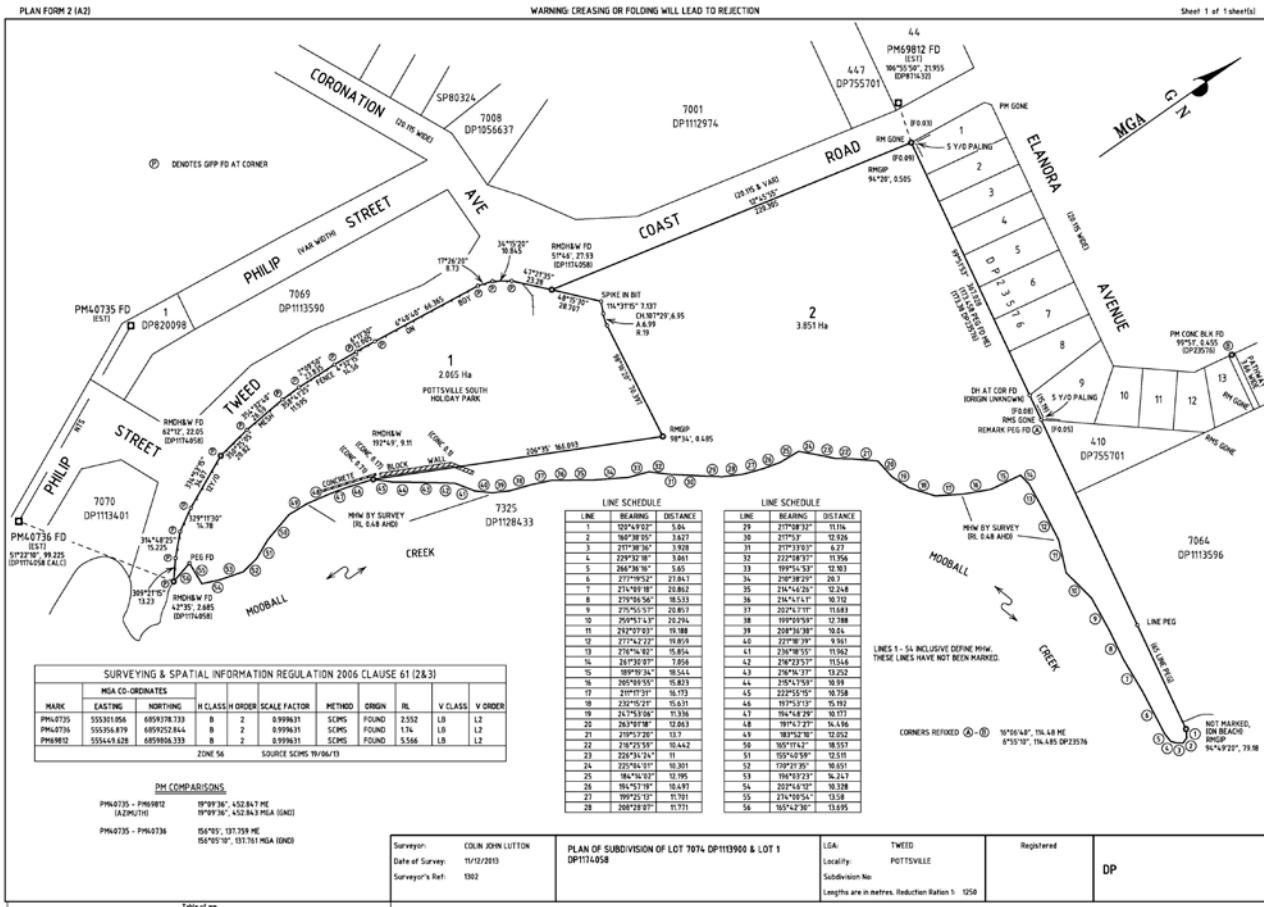
THIS PLAN WAS PREPARED SOLELY TO IDENTIFY CROWN LAND, AND THE BOUNDARIES HAVE NOT BEEN INVESTIGATED BY THE REGISTRAR GENERAL. THIS PLAN IS NOT A CURRENT PLAN IN TERMS OF S.7A CONVEYANCING ACT 1919.



A - B - C: MEAN HIGH WATER MARK

MEAN HIGH WATER MARK ADDED IN LPI VIDE 2008/1232 TCB76 2-7-2008

A plan of subdivision is currently being finalised, in accordance with the plan below:



It is necessary for a boundary adjustment to occur whereby the parcel will be subdivided to create different parcels for the separate reservations. This allows the development of the holiday park to progress without conflicting with the reservation of R1001008.

A plan has been prepared and it is recommended that the Trust support the subdivision of the parcels in light of the differing reservation purposes.

**OPTIONS:**

1. The Trust provides its in-principle support to the subdivision of Lot 7074 in DP 1113900; or
2. The Trust does not provide its in-principle support to the subdivision of Lot 7074 in DP 1113900

**CONCLUSION:**

The re-development of the South Pottsville Holiday Park is foreshadowed in the Tweed Coast Holiday Parks Business Plan and the necessity to separate the uses of the parcel facilitates the development of the holiday park, and will separate that part of Lot 7074 which contains protected vegetation to be within the Coastal Environment Protection reservation.

**IMPLICATIONS:**

**a. Budget:**

There are no financial or legal implications for this report.

**UNDER SEPARATE COVER/FURTHER INFORMATION:**

Nil.

---

**THIS PAGE IS BLANK**

**CONFIDENTIAL MATTERS**

Nil.

**THIS PAGE IS BLANK**