

# Tweed Heads Visitor Information Centre

## Chris Cunningham Park Tweed Heads

*Site Diagram*



<b>Status:</b>	<b>Approved by Council 26 June 2008</b>
<b>Funding Partners:</b>	<ul style="list-style-type: none"> <li>• Tweed Shire Council</li> <li>• Tourism NSW</li> <li>• Federal Dpt. of Infrastructure, Transport, Regional Development and Local Government</li> </ul>
<b>Project Managers:</b>	<ul style="list-style-type: none"> <li>• NSW Department of Commerce</li> </ul>
<b>Background:</b>	<p>The Visitor Information Centre (VIC) will establish an iconic gateway on the NSW / QLD Border. The site is strategically located within the Jack Evans Boat Harbour adjoining the Bay St and Wharf St intersection, the most significant intersection in the Tweed Heads CBD. This centre will provide a permanent, purpose-built Centre which includes the following elements:</p> <ol style="list-style-type: none"> <li>1. Information service area,</li> <li>2. Administrative area,</li> <li>3. Public toilets,</li> <li>4. Plaza, grassed area linking to the Jack Evans Boat Harbour redevelopment,</li> <li>5. Demolition of the existing public toilet block.</li> </ol>

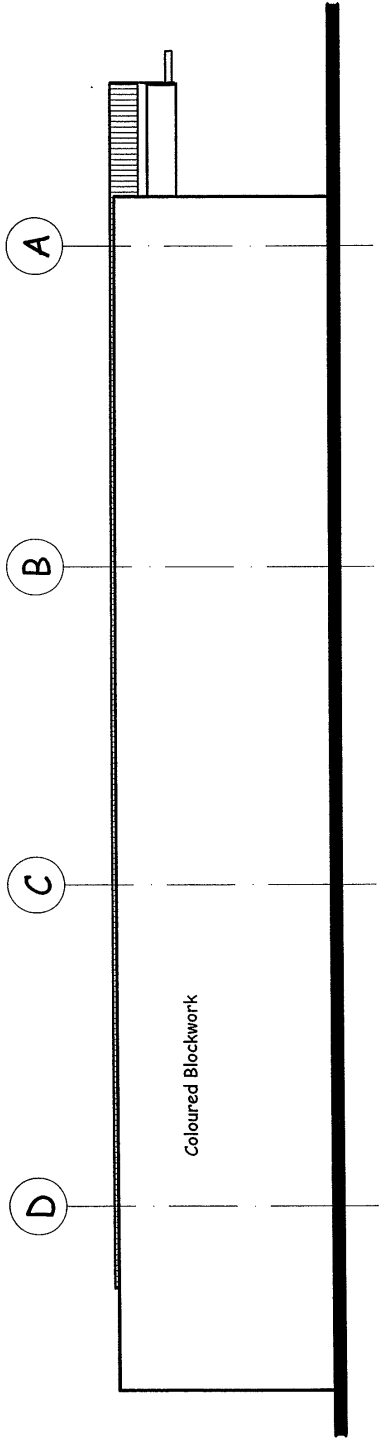


**VISITOR INFORMATION CENTRE  
TWEED HEADS**

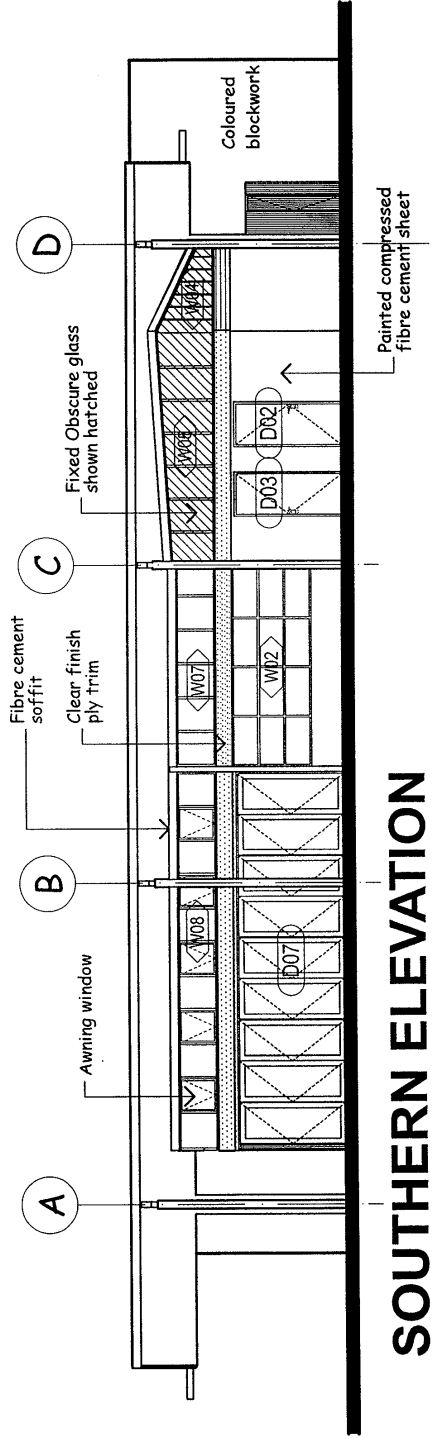
**27/03/2008  
5158NR02**



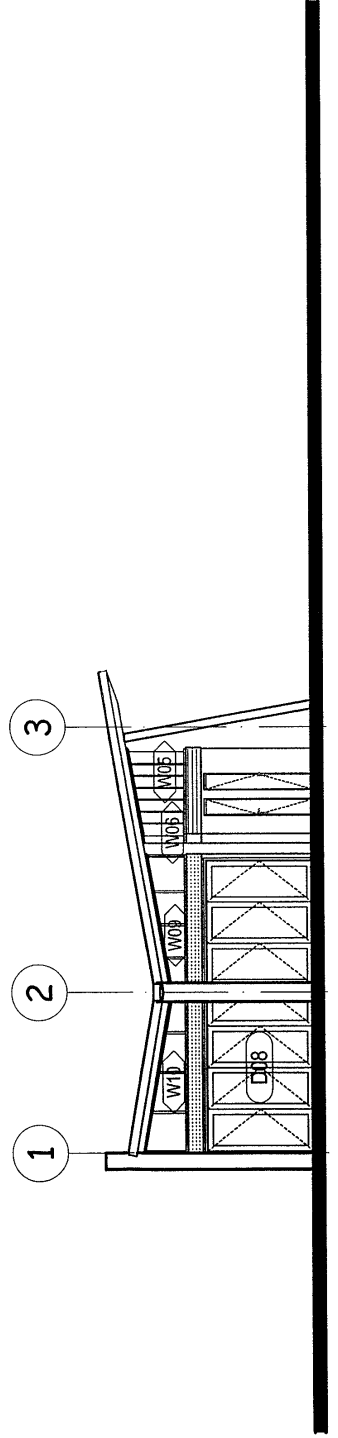
**FULTON TROTTER AND PARTNERS ARCHITECTS**



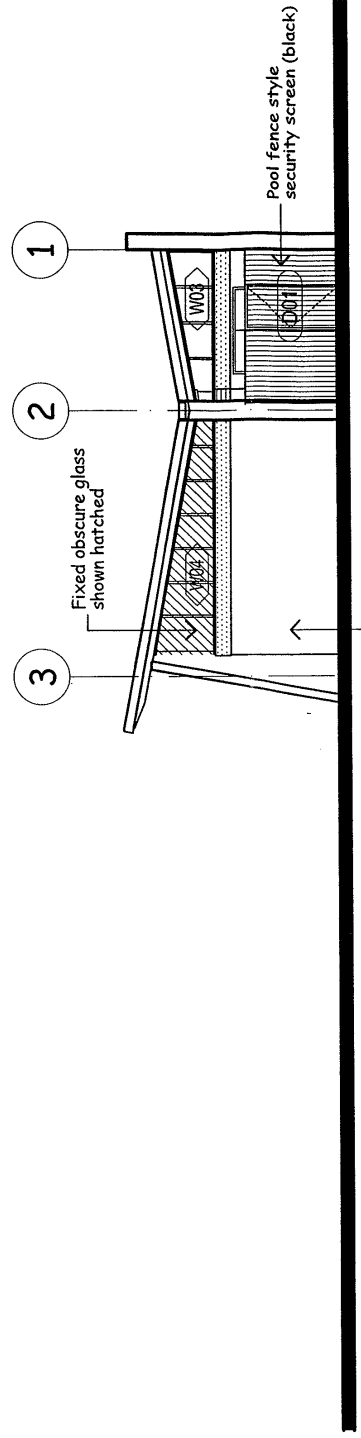
# NORTHERN ELEVATION



# SOUTHERN ELEVATION




# WESTERN ELEVATION



# EASTERN ELEVATION

THIS IS THE PLAN REFERRED TO IN THE DEVELOPMENT CONSENT No. DA102/0147.

26 JUN 2008

SIGNED 

## 06 PROPOSED ELEVATIONS

TWEED HEADS VISITOR INFORMATION CENTRE for the TWEED GATEWAY IMPLEMENTATION GROUP

5158NR02

plot date: Tuesday, 11 December 2007 file location: P:\common\5158nr02.tweed visitor information centre\DRAWINGS\Information Centre.dwg

1:100 @ A3

FULTON TROTTER AND PARTNERS ARCHITECTS