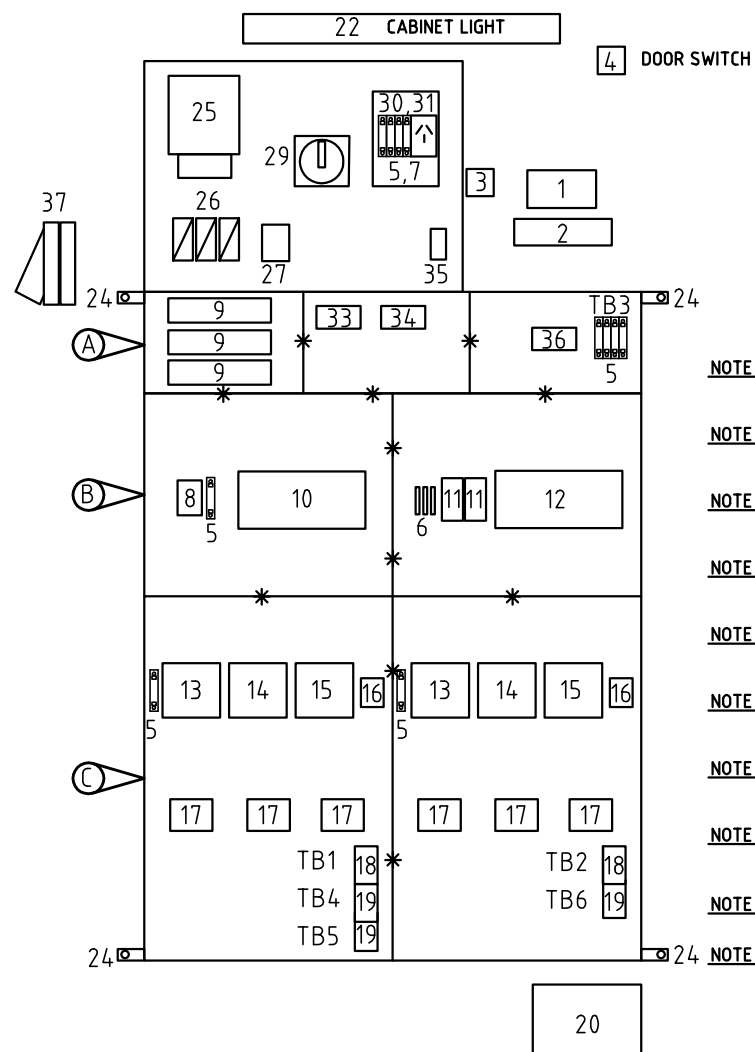


EQUIPMENT SCHEDULE

| | |
|----|--|
| A | ENCLOSURE - TYPE MOELLER CI23E - 200 |
| B | ENCLOSURE - TYPE MOELLER CI44E - 200 |
| C | ENCLOSURE - TYPE MOELLER CI45E - 200 |
| 1 | TELEMETRY POWER SUPPLY - TYPE RFI INDUSTRIES SME 240-12-10 10 AMP POWER SUPPLY |
| 2 | TELEMETRY RADIO - TYPE ICOM IC-400PRO |
| 3 | TELEMETRY SURGE DIVERTER TYPE IS - B50LN - C1 |
| 4 | DOOR SWITCH - TYPE ATO - 11 - 1 - I PLUS OPERATING HEAD TYPE R - ATO |
| 5 | MOELLER FAZS CIRCUIT BREAKERS RATINGS AS PER SCHEMATIC |
| 6 | 3x250mA CERAMIC FUSES & HOLDERS TYPE PHOENIX CONTACT-UKS-HESI |
| 7 | 1 X 2 POLE 16A RCD/MCB |
| 8 | CRITEC DINLINE SURGE FILTER - TYPE TDF - 3A - 240v |
| 9 | CRITEC SURGE DIVERTERS - TYPE T.D.S. - M.T.U. - 277 |
| 10 | MULTITRODE CONTROLLER - TYPE MT2PC 240V |
| 11 | MULTITRODE CURRENT SHUNT ADAPTORS - TYPE SR5 |
| 12 | MULTITRODE MONITOR PRO |
| 13 | PUMP ISOLATOR - TYPE MOELLER PKZ-2/ZM OVERLOAD, SHORT CIRCUIT CONTACTS - TYPE MOELLER A.G.M. 2 - 11 - PKZ2 ON - OFF POSITION CONTACTS - TYPE MOELLER NH11 - PKZ2 |
| 14 | CONTACTOR AS PER KW RATING - TYPE KLOCKNER MOELLER |
| 15 | SOLID STATE STARTERS AS PER KW RATING - TYPE TELEMECANIQUE ATS OIN SOFT START/STOP |
| 16 | KEY OPERATED OVERRIDE SWITCH - TYPE MOELLER TO - 1 - 102/Z/S |
| 17 | CURRENT TRANSFORMERS - TYPE HAGER SR050 |
| 18 | TERMINALS FOR CONNECTION TO PUMP ELECTRICAL LEADS (TB1, TB2) |
| 19 | TERMINALS FOR CONNECTION TO MULTITRODE PROBE + PROTECTION(TB4,5,6) |
| 20 | TELEMETRY BATTERY - TYPE PANASONIC LC - X1228AP |
| 21 | TELEMETRY AERIAL - MODEL NO: YB6-62, 480-520 MHZ TO BE MOUNTED ON RISER BRACKET ABOVE CABINET |
| 22 | CABINET LIGHT - 1x18W THORN IMPACT WEATHERPROOF TYPE IMP 118 OH |
| 23 | ASSEMBLY KITS CONSIST OF MOELLER GASKETS TO SEAL FACES BETWEEN ENCLOSURES PLUS MOELLER WEDGES & CONNECTING PIECES FOR ENCLOSURE ASSEMBLY |
| 24 | MOUNTING BKT - TYPE MOELLER BL-CI (-VA) |
| 25 | SUPPLY AUTHORITY POLY PHASE METER |
| 26 | 3 X SUPPLY AUTHORITY SERVICE FUSES |
| 27 | SERVICE NEUTRAL LINK |
| 28 | CONSUMERS NEUTRAL LINK |
| 29 | 115A 4 POLE MAIN SW / GENERATOR CHANGE-OVER SW MOELLER CAM SW T5-4-82/3/E WITH SUB-P3 PADLOCKABLE HANDLE. |
| 30 | 9 POLE DISTRIBUTION CENTRE, 1 X 2 POLE 16A RCD/MCB |
| 31 | GPO 15A |
| 32 | MCC ACTIVE LINKS (TYPE ???) |
| 33 | MCC NEUTRAL LINK |
| 34 | MCC EARTH LINK |
| 35 | CABINET LIGHT SW (CLIPSAL ARCHITRAVE SW AND MOUNTING BLOCK BLOCK) |
| 36 | ELV TERMINAL BLOCK (TB3) |
| 37 | CLIPSAL 56A1532 5 PIN INLET SOCKET (TO 15kW), OR 56A1550 (16-22.5kW) |
| 38 | ALARM LIGHT, TOBIN SYF 130-12A 12VDC AMBER STROBE LIGHT. |

DOUBLE HINGED METER PANEL

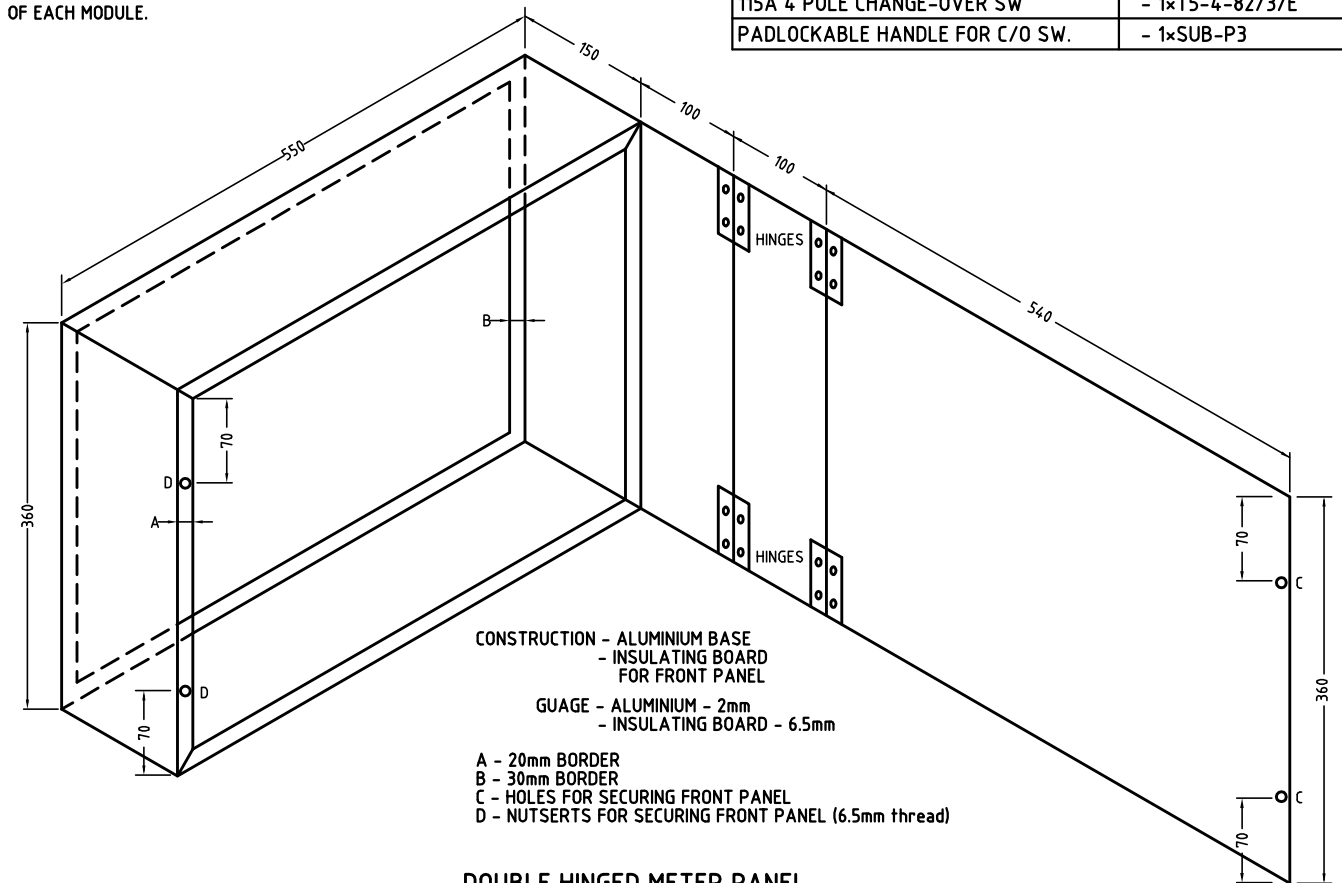


CONTROL PANEL LAYOUT

- NOTE 1** 40mm CONDUIT TO BOTTOM OF CABINET TO CARRY MAINS & EARTH FROM METER PANEL
- NOTE 2** 20mm CONDUIT TO BOTTOM OF CABINET TO CARRY EARTH FROM SURGE DIVERTERS
- NOTE 3** OVERLOAD, SHORT CIRCUIT TRIP & ON/OFF POSITION CONTACTS ARE ON PKZ-2/ZM ISOLATOR
- NOTE 4** TERMINALS TO BE PROVIDED FOR CONNECTION TO PUMPS & MULTITRODE PROBE
- NOTE 5** SLOTTED DUCT TO CARRY WIRING IN C144 E - 200 & C145 E - 200 ENCLOSURES
- NOTE 6** ASSEMBLY KITS TO BE USED TO CONNECT ENCLOSURES TO ONE ANOTHER SEE ITEM 23 (SHOWN THUS *) ON CONTROL PANEL LAYOUT & EQUIPMENT SCHEDULE
- NOTE 7** BATTERY TO BE MOUNTED ON ALUMINIUM TRAY & HOLDER AT BASE OF CABINET
- NOTE 8** ALL CONDUITS TO BE CAPPED & CABLES TO BE GLANDED INSIDE CABINET TO PREVENT ODOUR TRANSFER FROM WELL
- NOTE 9** DISREGARD ITEM 15 (SOLID STATE STARTER) IF D.O.L. STARTER IS SPECIFIED.
- NOTE 10** SIZE OF PENETRATIONS BETWEEN INDIVIDUAL ENCLOSURES SHALL BE KEPT TO A MINIMUM AND BE BUSHED OR GLANDED TO MAINTAIN THE INTEGRITY OF EACH MODULE.

MOELLER PARTS LIST

| | |
|-----------------------------------|---|
| INDIVIDUAL ENCLOSURE BOXES | - 3xU-CI23E - 2xU-CI44E - 2xU-CI45E |
| TRANSPARENT COVERS | - 3xD150-CI23 - 2xD200-CI44 - 2xD200-CI45 |
| MOUNTING PLATES | - 3xM3-CI23 - 2xM3-CI44 - 2xM3-CI45 |
| FLANGE ADAPTOR | - 3xFT-CI |
| ASSEMBLY KITS | - 2xBS2-CI - 6xBS3-CI - 2xBS4-CI |
| FLANGES | - 2xFL4-X |
| MOTOR PROTECTION CIRCUIT BREAKERS | - 2xPKZ 2/ZM-AS PER KW RATING |
| TRIP INDICATING CIRCUITS | - 2xFL4-X |
| STANDARD AUXILIARY CONTACTS | - 2xNHI 11-PKZ2 |
| EXTENSION SHAFT | - 2xA-H-PKZ2 |
| DOOR COUPLING HANDLE | - 2xH-PKZ2 |
| SHAFT EXTENSION | - 10xZAV-TO |
| MASTER KEY LOCK SWITCH | - 2xTO-1-102/Z/S |
| MINATURE CIRCUIT BREAKERS | - 4xFAZS B6 - 2xFAZS B10 - 1xFAZS C16 |
| BUSBAR | - 1xFAZ-XIS1/12 |
| INCOMING TERMINALS | - 1xFAZ-XK25 |
| CONTACTOR | - DILM AS PER KW RATING |
| LIMIT SWITCH | - LS-XRL |
| OPERATING HEAD | - LS-XRL |
| FIXING STRAPS | - 6xBL-CI PIECES |
| 115A 4 POLE CHANGE-OVER SW | - 1xT5-4-82/3/E |
| PADLOCKABLE HANDLE FOR C/O SW. | - 1xSUB-P3 |



CONSTRUCTION - ALUMINIUM BASE
- INSULATING BOARD FOR FRONT PANEL
GUAGE - ALUMINIUM - 2mm
- INSULATING BOARD - 6.5mm
A - 20mm BORDER
B - 30mm BORDER
C - HOLES FOR SECURING FRONT PANEL
D - NUTSERTS FOR SECURING FRONT PANEL (6.5mm thread)

DOUBLE HINGED METER PANEL

| | | | |
|-------|--------------------------|----------|----------|
| REV A | UPDATE GA AND SCHEMATICS | D.F. | 3.5.07 |
| ISSUE | ORIGINAL ISSUE | D.F. | 13.02.06 |
| ISSUE | AMENDMENT DETAILS | INITIALS | DATE |



TWEED SHIRE COUNCIL
ELECTRICAL MECHANICAL UNIT
COUNCIL OFFICES
TUMBULGUM ROAD,
MURWILLUMBAH,
NEW SOUTH WALES, 2484
PHONE MURWILLUMBAH 02 66702400
FAX MURWILLUMBAH 02 66727513
WEBSITE www.tweed.nsw.gov.au

| | | |
|-------------------|-------------------|---------------------------------|
| ELEC CO-ORDINATOR | <i>Raylan</i> | DATE 29.05.08 |
| DESIGN MANAGER | <i>Joe Harris</i> | DATE 29.05.08 |
| DRAWN: | <i>PT</i> | ELECTRICAL SERVICES DESIGN UNIT |
| SCALE | NTS | |

| | |
|-------------|---|
| PROJECT: | SEWAGE PUMP STATIONS SOFT STARTERS, 0.1 - 22.5kW ELECTRICAL STANDARD DRAWINGS |
| PLAN TITLE: | SWITCHBOARD GENERAL ARRANGEMENT AND EQUIPMENT LIST |

| | |
|-----------------|------------------|
| DRAWING NUMBER: | SD-801/05 |
| SHEET 05 OF 08 | |
| REVISION-A | MAY 2007 |