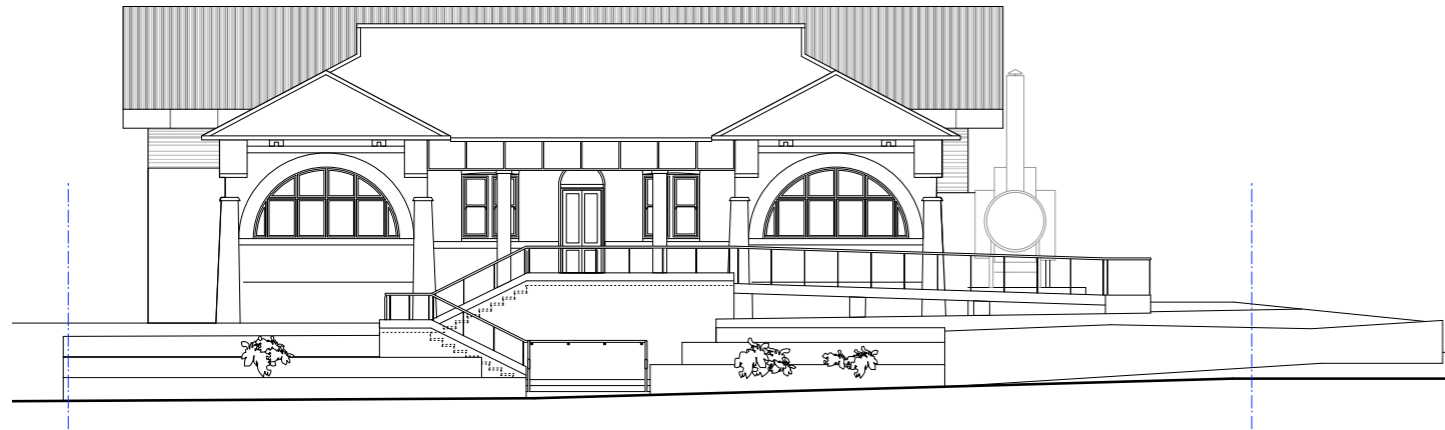


Tweed River Regional Museum expansion

Fact sheet



The western elevation of the existing museum building and the proposed extensions.



Council is undertaking a \$2.6 million expansion of the Tweed River Regional Museum in Murwillumbah, to create a better facility to store and display its valuable collections.

The Queensland Road facility is entering an exciting period of development, with a new building design adopted by Council in November and preparations underway to construct dedicated storage for the collections.

Concept plans complete

Concept plans to redevelop the existing museum site at Murwillumbah were adopted by Council at its meeting on 15 November.

Project architect Paul Berkemeier developed the concept in consultation with Murwillumbah Historical Society members, Council staff and Tweed Shire councillors.

The innovative design maximises the potential of the Murwillumbah site and provides a facelift for the existing heritage building, meeting the highest heritage principles and museum standards.



More information

A development application for the museum extension, including concept plans, will be available for public viewing and comment through Council's website at www.tweed.nsw.gov.au, at the Murwillumbah Council offices and the Murwillumbah library.

For additional information, contact Council's Senior Museum Curator, Judy Kean, on (02) 6670 2400.

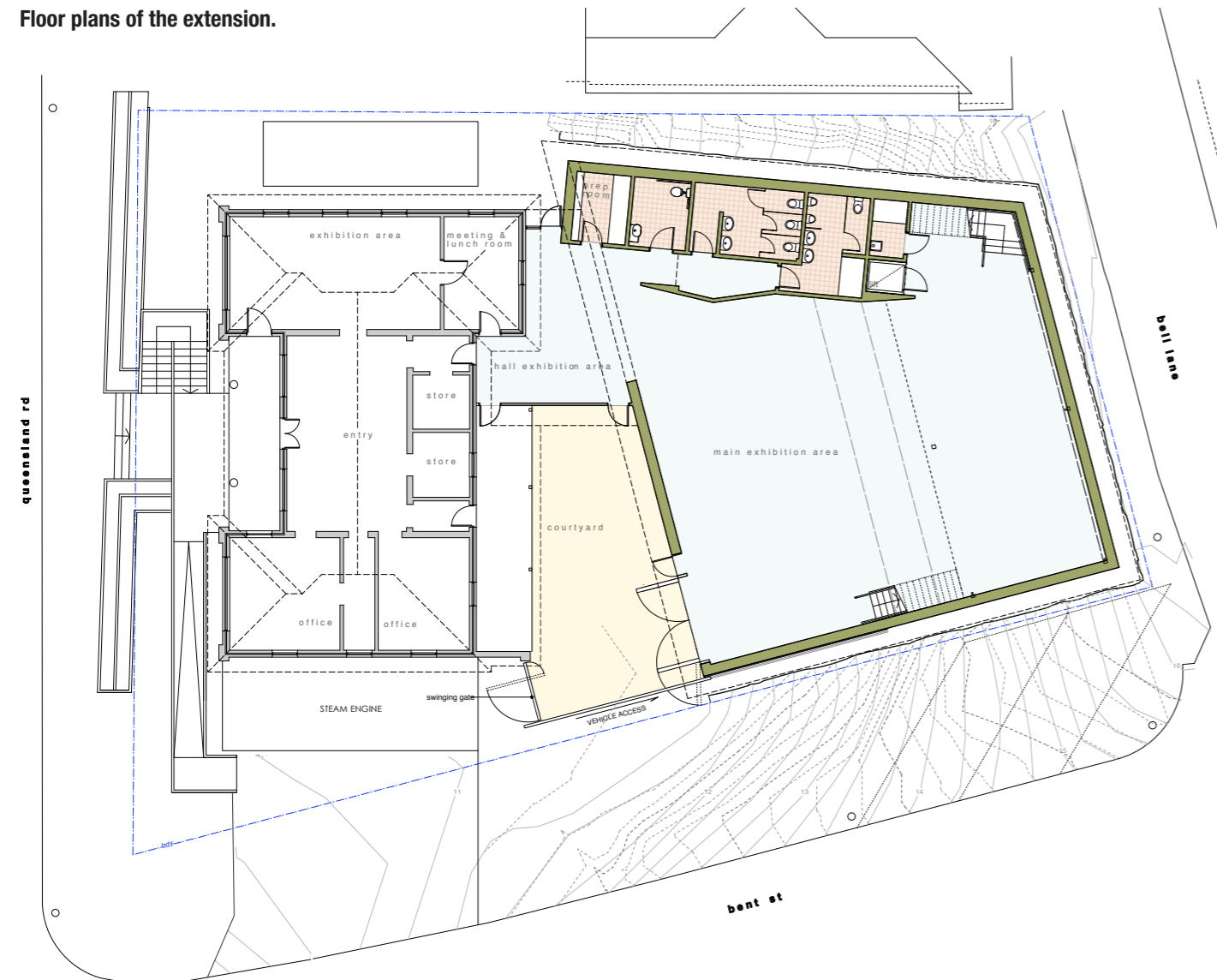
Project updates

Regular updates will also be available on www.tweed.nsw.gov.au and update articles will feature in Council's newsletter, the Tweed Link.

Tweed River Regional Museum expansion

Fact sheet

Floor plans of the extension.



It will provide substantial new collection display space, a significantly increased capacity to cater for visitors and school groups, and maintains a research centre for the Murwillumbah Historical Society.

Storage of collections

Council is also constructing a purpose-built storage facility in South Murwillumbah. This facility will house the museum's

collection while the Queensland Road building is being extended. In the long-term, it will provide ongoing storage for items in the museum collection, to better protect these pieces and allow greater flexibility with displays at the museum.

Construction of the storage facility is expected to begin in early 2012 and is scheduled for completion in the second half of the year.

An artists sketch of the proposed extensions.



Museum on the move

Volunteers and staff will be extremely busy during the next 12 months, completing the painstaking task of assessing and preparing the collection for the move.

Building at the Murwillumbah site is expected to start in the second half of 2012, once its collections have been relocated.

Museum closed to the public

It will be necessary to close the Tweed River Regional Museum in Murwillumbah to the public throughout 2012, so its collection can be sorted and packed, and work can begin to construct the museum extension.

The museum will close for the Christmas break on 16 December 2011 and will not reopen again in 2012. However, museum staff can be contacted during this period by phoning (02) 6670 2400 or by email at trrm@tweed.nsw.gov.au.

