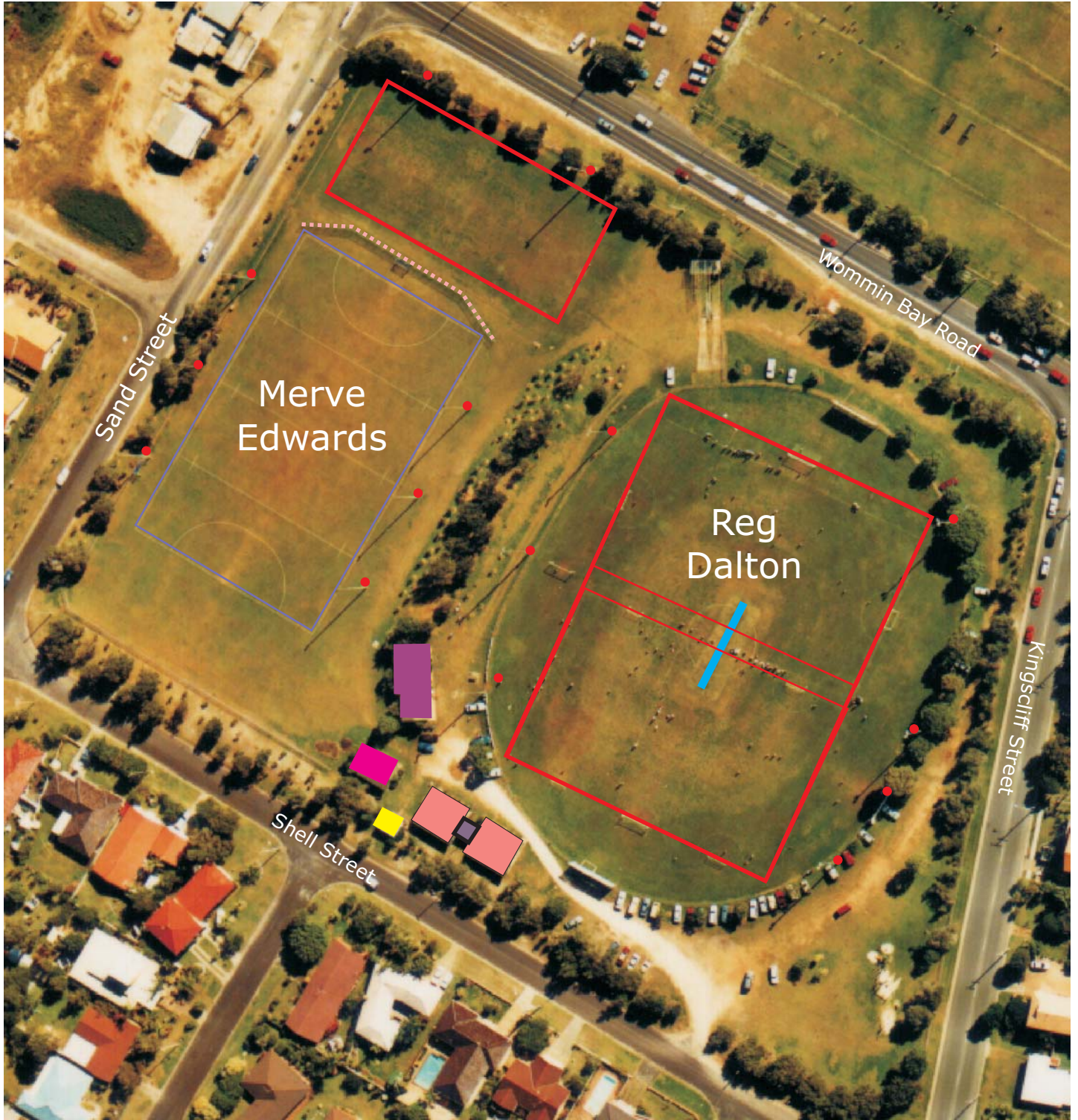


Reg Dalton (1.17ha) & Merve Edwards Fields (1.9ha) Lot 1 Section 17 DP 758571 Total 4.190 ha



- | | | | |
|---|------------------------|---|------------------|
|  | Clubhouse/Canteen/Bar |  | Soccer Fields |
|  | Toilets |  | Hockey Fields |
|  | Change Room Facilities |  | Synthetic Wicket |
|  | Storage Room |  | Lights |
|  | Council Cricket Shed |  | Backnets |

