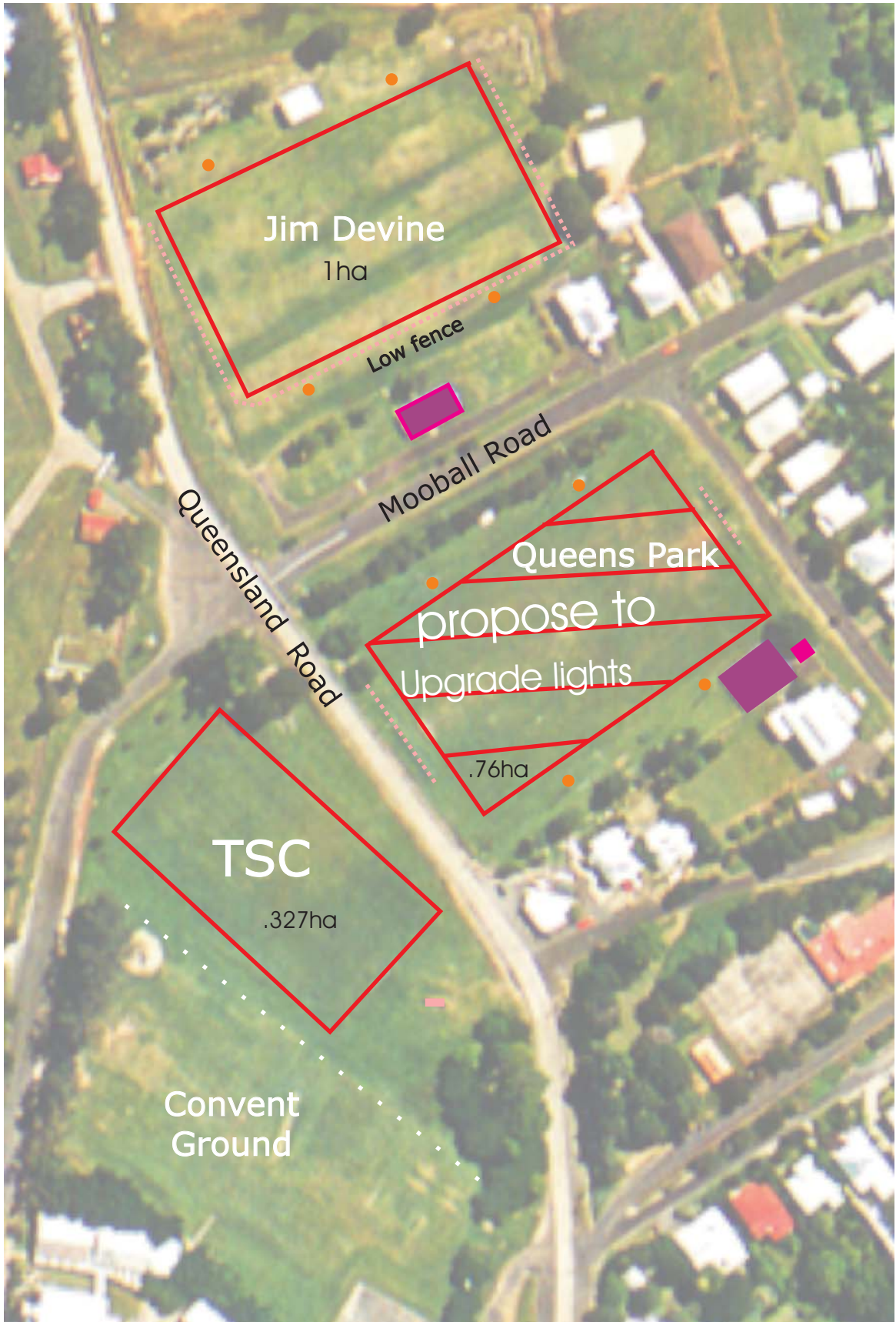









Jim Devine (Lot46 DP 755724 - Area 1.707 ha),
Queens Park (R 65931 - Area .76 ha)
& Convent Grounds (Lot 1 DP 225827 - Area .6576 ha)
Murwillumbah



	Soccer Field		Clubhouse/Toilet		Lights	
	High Back Nets		Kick Board		Toilets	